



**INTERNATIONAL
GEMOLOGICAL
INSTITUTE**

ELECTRONIC COPY

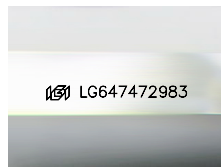
LG647472983



August 16, 2024
IGI Report Number LG647472983
PRINCESS CUT
LABORATORY GROWN DIAMOND
4.83 X 4.72 X 3.02 MM
 Carat Weight **0.63 CARAT**
 Color Grade **E**
 Clarity Grade **VVS 2**
 Polish **VERY GOOD**
 Symmetry **VERY GOOD**
 Fluorescence **NONE**
 Inscription(s) **IGI LG647472983**

LABORATORY GROWN DIAMOND REPORT

August 16, 2024
 IGI Report Number **LG647472983**
 Description **LABORATORY GROWN DIAMOND**
 Shape and Cutting Style **PRINCESS CUT**
 Measurements **4.83 X 4.72 X 3.02 MM**



Sample Image Used

Comments: This Laboratory Grown Diamond was created by Chemical Vapor Deposition (CVD) growth process. Type IIa

GRADING RESULTS

Carat Weight **0.63 CARAT**
 Color Grade **E**
 Clarity Grade **VVS 2**

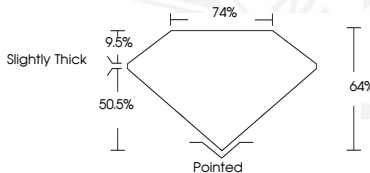
ADDITIONAL GRADING INFORMATION

Polish **VERY GOOD**
 Symmetry **VERY GOOD**
 Fluorescence **NONE**
 Inscription(s) **IGI LG647472983**

Comments: This Laboratory Grown Diamond was created by Chemical Vapor Deposition (CVD) growth process. Type IIa



August 16, 2024
IGI Report Number LG647472983
PRINCESS CUT
LABORATORY GROWN DIAMOND
4.83 X 4.72 X 3.02 MM
 Carat Weight **0.63 CARAT**
 Color Grade **E**
 Clarity Grade **VVS 2**
 Polish **VERY GOOD**
 Symmetry **VERY GOOD**
 Fluorescence **NONE**
 Inscription(s) **IGI LG647472983**



Comments: This Laboratory Grown Diamond was created by Chemical Vapor Deposition (CVD) growth process. Type IIa

THIS DOCUMENT WAS PRODUCED WITH THE FOLLOWING SECURITY MEASURES: SPECIAL DOCUMENT PAPER, INK SCREENS, WATERMARK, BACKGROUND DESIGN, HOLOGRAM AND OTHER SECURITY FEATURES NOT LISTED AND DO EXCEED DOCUMENT SECURITY INDUSTRY GUIDELINES.

For terms & conditions and to verify this report, please visit www.igi.org