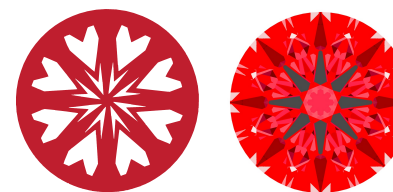




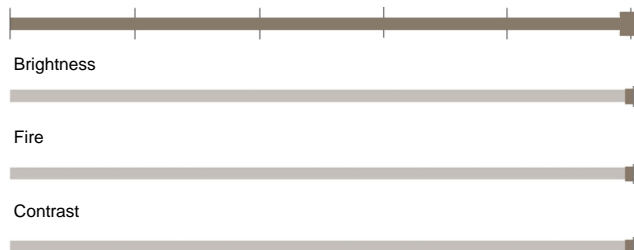
Light Performance Grade: Exceptional



Ideal-Scope representation

Low Moderate High Superior Exceptional

Light Performance



COLOR

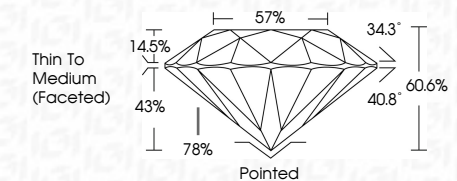
D E F G H I J Faint Very Light Light

CLARITY

IF	VS ¹⁻²	VS ¹⁻²	SI ¹⁻²	I ¹⁻³
Internally Flawless	Very Very Slightly Included	Very Slightly Included	Slightly Included	Included



August 13, 2024
 IGI Report Number **LG647474323**
 Description **LABORATORY GROWN DIAMOND**
 Shape and Cutting Style **ROUND BRILLIANT**
 Measurements **6.89 - 6.92 X 4.19 MM**
GRADING RESULTS
 Carat Weight **1.21 CARAT**
 Color Grade **D**
 Clarity Grade **VVS 2**
 Cut Grade **IDEAL**



ADDITIONAL GRADING INFORMATION
 Polish **EXCELLENT**
 Symmetry **EXCELLENT**
 Fluorescence **NONE**
 Inscription(s) **IGI LG647474323**
 Comments: HEARTS & ARROWS
 This Laboratory Grown Diamond was created by Chemical Vapor Deposition (CVD) growth process. Type IIa



ELECTRONIC COPY
LABORATORY GROWN DIAMOND REPORT

August 13, 2024
 IGI Report Number **LG647474323**
 Description **LABORATORY GROWN DIAMOND**
 Shape and Cutting Style **ROUND BRILLIANT**
 Measurements **6.89 - 6.92 x 4.19 mm**

GRADING RESULTS

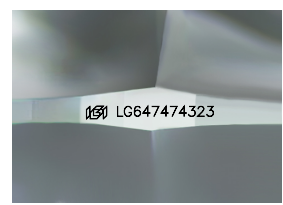
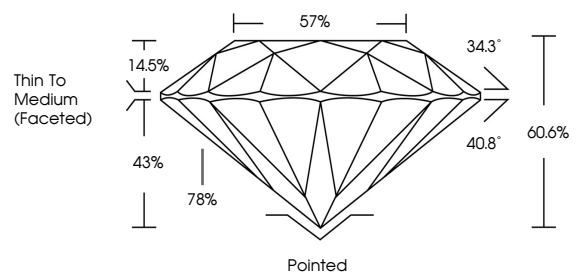
Carat Weight **1.21 CARAT**
 Color Grade **D**
 Clarity Grade **VVS 2**
 Cut Grade **IDEAL**

ADDITIONAL GRADING INFORMATION

Polish **EXCELLENT**
 Symmetry **EXCELLENT**
 Fluorescence **NONE**
 Inscription(s) **IGI LG647474323**

Comments: HEARTS & ARROWS
 This Laboratory Grown Diamond was created by Chemical Vapor Deposition (CVD) growth process. Type IIa

PROPORTIONS



Sample Image Used



August 13, 2024	1.21 CARAT
IGI Report No LG647474323	D
ROUND BRILLIANT	VVS 2
6.89 - 6.92 X 4.19 MM	IDEAL
Carat Weight	60.6%
Color Grade	78%
Clarity Grade	Thin To Medium (Faceted)
Cut Grade	Pointed
Depth	EXCELLENT
Table	EXCELLENT
Girdle	NONE
Culet	Inscription(s)
Polish	IGI LG647474323
Symmetry	Comments: HEARTS & ARROWS
Fluorescence	This Laboratory Grown Diamond was created by Chemical Vapor Deposition (CVD) growth process.
Inscription(s)	Type IIa