



ELECTRONIC COPY

LG647478154
Report verification at igi.org



August 18, 2024
IGI Report Number LG647478154
Description LABORATORY GROWN DIAMOND
Shape and Cutting Style SQUARE CUSHION MODIFIED BRILLIANT
Measurements 7.95 X 7.72 X 5.37 MM
GRADING RESULTS
Carat Weight 3.01 CARATS
Color Grade FANCY INTENSE YELLOW
Clarity Grade VVS 2

LABORATORY GROWN DIAMOND REPORT

August 18, 2024
IGI Report Number LG647478154
Description LABORATORY GROWN DIAMOND
Shape and Cutting Style SQUARE CUSHION MODIFIED BRILLIANT
Measurements 7.95 X 7.72 X 5.37 MM

GRADING RESULTS

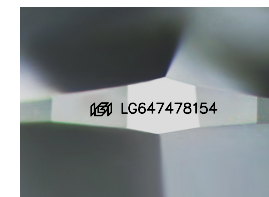
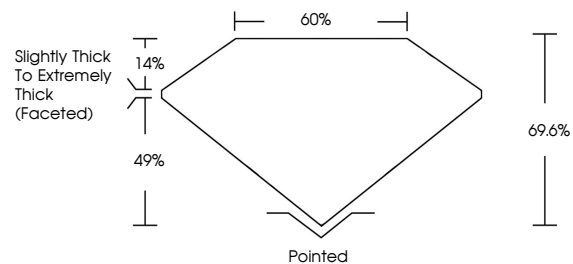
Carat Weight 3.01 CARATS
Color Grade FANCY INTENSE YELLOW
Clarity Grade VVS 2

ADDITIONAL GRADING INFORMATION

Polish EXCELLENT
Symmetry EXCELLENT
Fluorescence NONE
Inscription(s) LG647478154

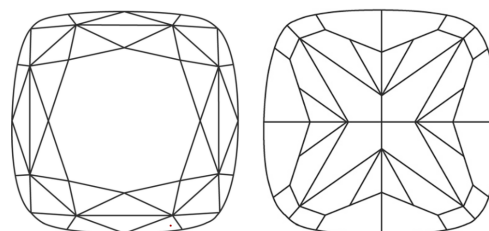
Comments: This Laboratory Grown Diamond was created by Chemical Vapor Deposition (CVD) growth process.

PROPORTIONS



Sample Image Used

CLARITY CHARACTERISTICS



KEY TO SYMBOLS

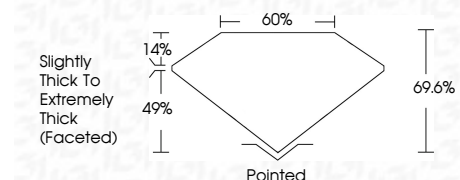
Red symbols indicate internal characteristics.
Green symbols indicate external characteristics.

COLOR

D E F G H I J Faint Very Light Light

CLARITY

IF VS 1-2 VS 1-2 SI 1-2 I 1-3
Internally Flawless Very Very Slightly Included Very Slightly Included Slightly Included Included



ADDITIONAL GRADING INFORMATION

Polish EXCELLENT
Symmetry EXCELLENT
Fluorescence NONE
Inscription(s) LG647478154
Comments: This Laboratory Grown Diamond was created by Chemical Vapor Deposition (CVD) growth process.



August 18, 2024
IGI Report No LG647478154
SQUARE CUSHION MODIFIED BRILLIANT
3.01 CARATS
FANCY INTENSE YELLOW
VVS 2
7.95 X 7.72 X 5.37 MM
69.6%
Slightly Thick To Extremely Thick (Faceted) Pointed
EXCELLENT EXCELLENT NONE
None
Comments: This Laboratory Grown Diamond was created by Chemical Vapor Deposition (CVD) growth process.