



ELECTRONIC COPY

LG647478583
Report verification at igi.org



August 14, 2024

IGI Report Number **LG647478583**

Description **LABORATORY GROWN DIAMOND**

Shape and Cutting Style **PRINCESS CUT**

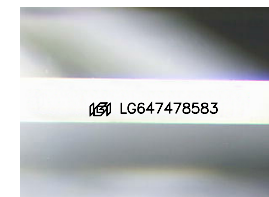
Measurements **6.48 X 6.39 X 4.40 MM**

GRADING RESULTS

Carat Weight **1.62 CARAT**

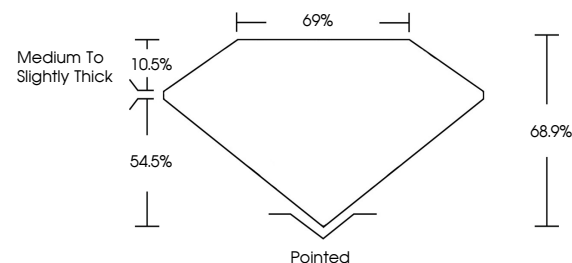
Color Grade **F**

Clarity Grade **VS 1**

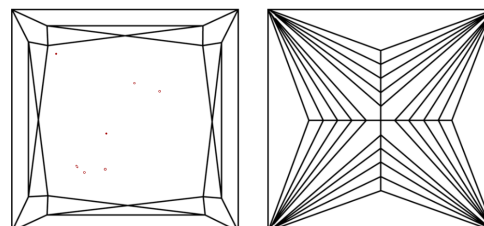


Sample Image Used

PROPORTIONS



CLARITY CHARACTERISTICS



KEY TO SYMBOLS

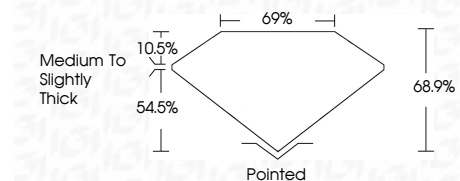
Red symbols indicate internal characteristics.
Green symbols indicate external characteristics.

COLOR

D E F G H I J Faint Very Light Light

CLARITY

IF	VS ¹⁻²	VS ¹⁻²	SI ¹⁻²	I ¹⁻³
Internally Flawless	Very Very Slightly Included	Very Slightly Included	Slightly Included	Included



ADDITIONAL GRADING INFORMATION

Polish **EXCELLENT**

Symmetry **EXCELLENT**

Fluorescence **NONE**

Inscription(s) **IGI LG647478583**

Comments: This Laboratory Grown Diamond was created by Chemical Vapor Deposition (CVD) growth process.
Type IIa



IGI



August 14, 2024
IGI Report No LG647478583
PRINCESS CUT

6.48 X 6.39 X 4.40 MM

1.62 CARAT
F

Color Grade
Clarity Grade

68.9%
69%

Medium to Slightly Thick

Pointed
EXCELLENT
EXCELLENT
NONE

IGI LG647478583

Comments: This Laboratory Grown Diamond was created by Chemical Vapor Deposition (CVD) growth process.
Type IIa