



ELECTRONIC COPY

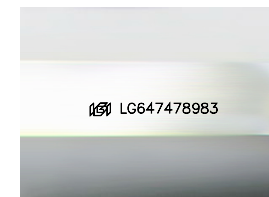
LG647478983
Report verification at igi.org



August 14, 2024
IGI Report Number **LG647478983**
Description **LABORATORY GROWN DIAMOND**
Shape and Cutting Style **EMERALD CUT**
Measurements **8.29 X 5.48 X 3.45 MM**

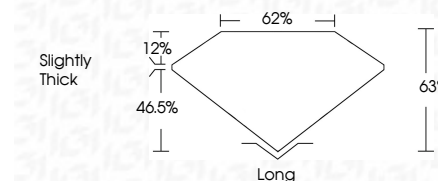
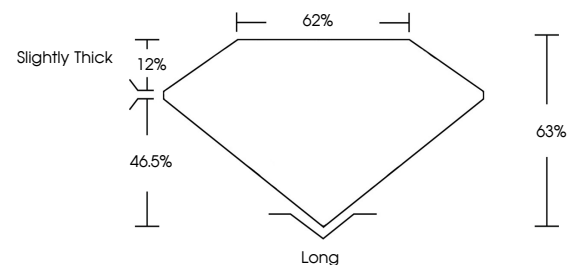
GRADING RESULTS

Carat Weight **1.64 CARAT**
Color Grade **H**
Clarity Grade **VVS 2**

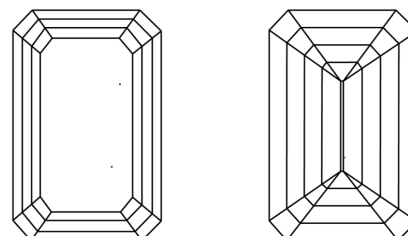


Sample Image Used

PROPORTIONS



CLARITY CHARACTERISTICS



KEY TO SYMBOLS

Red symbols indicate internal characteristics.
Green symbols indicate external characteristics.

COLOR

D E F G H I J Faint Very Light Light

CLARITY

IF	VS ¹⁻²	VS ¹⁻²	SI ¹⁻²	I ¹⁻³
Internally Flawless	Very Very Slightly Included	Very Slightly Included	Slightly Included	Included

ADDITIONAL GRADING INFORMATION

Polish **EXCELLENT**
Symmetry **EXCELLENT**
Fluorescence **NONE**
Inscription(s) **IGI LG647478983**
Comments: This Laboratory Grown Diamond was created by Chemical Vapor Deposition (CVD) growth process.
Type IIa



IGI



August 14, 2024
IGI Report No LG647478983
EMERALD CUT
8.29 X 5.48 X 3.45 MM
1.64 CARAT
H
VVS 2
63%
62%
Slightly Thick
Long
EXCELLENT
EXCELLENT
NONE
IGI LG647478983
Comments: This Laboratory Grown Diamond was created by Chemical Vapor Deposition (CVD) growth process.
Type IIa