



**ELECTRONIC COPY**

LG647479419  
Report verification at igi.org



August 20, 2024

IGI Report Number **LG647479419**

Description **LABORATORY GROWN DIAMOND**

Shape and Cutting Style **EMERALD CUT**

Measurements **8.26 X 6.01 X 4.18 MM**

**GRADING RESULTS**

Carat Weight **2.09 CARATS**

Color Grade **FANCY INTENSE PINK**

Clarity Grade **VS 1**

**LABORATORY GROWN DIAMOND REPORT**

August 20, 2024

IGI Report Number **LG647479419**

Description **LABORATORY GROWN DIAMOND**

Shape and Cutting Style **EMERALD CUT**

Measurements **8.26 X 6.01 X 4.18 MM**

**GRADING RESULTS**

Carat Weight **2.09 CARATS**

Color Grade **FANCY INTENSE PINK**

Clarity Grade **VS 1**

**ADDITIONAL GRADING INFORMATION**

Polish **EXCELLENT**

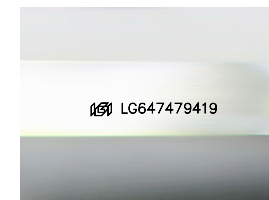
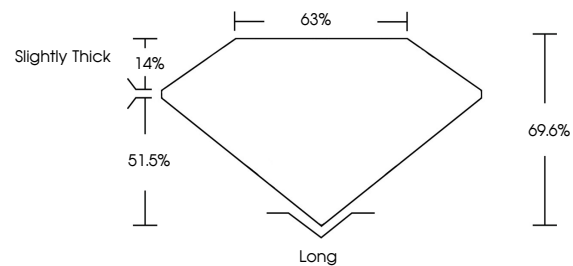
Symmetry **EXCELLENT**

Fluorescence **SLIGHT**

Inscription(s) **LG647479419**

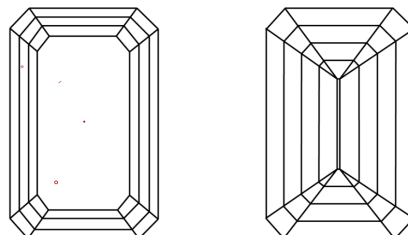
Comments: This Laboratory Grown Diamond was created by Chemical Vapor Deposition (CVD) growth process. Indications of post-growth treatment.

**PROPORTIONS**



Sample Image Used

**CLARITY CHARACTERISTICS**



**KEY TO SYMBOLS**

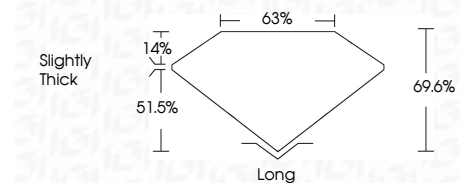
Red symbols indicate internal characteristics.  
Green symbols indicate external characteristics.

**COLOR**

D E F G H I J Faint Very Light Light

**CLARITY**

IF	VS <sup>1-2</sup>	VS <sup>1-2</sup>	SI <sup>1-2</sup>	I <sup>1-3</sup>
Internally Flawless	Very Very Slightly Included	Very Slightly Included	Slightly Included	Included



**ADDITIONAL GRADING INFORMATION**

Polish **EXCELLENT**

Symmetry **EXCELLENT**

Fluorescence **SLIGHT**

Inscription(s) **LG647479419**

Comments: This Laboratory Grown Diamond was created by Chemical Vapor Deposition (CVD) growth process. Indications of post-growth treatment.



**IGI**



August 20, 2024  
IGI Report No LG647479419  
**EMERALD CUT**  
8.26 X 6.01 X 4.18 MM  
2.09 CARATS  
FANCY INTENSE PINK  
Color Grade  
VS 1  
Depth 69.6%  
Table 63%  
Girdle Slightly Thick  
Culet Long  
Polish EXCELLENT  
Symmetry EXCELLENT  
Fluorescence SLIGHT  
Inscription(s) LG647479419  
Comments: This Laboratory Grown Diamond was created by Chemical Vapor Deposition (CVD) growth process. Indications of post-growth treatment.