



ELECTRONIC COPY

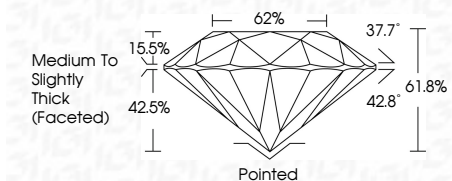
LG647479451
Report verification at igi.org



August 21, 2024
IGI Report Number **LG647479451**
Description **LABORATORY GROWN DIAMOND**
Shape and Cutting Style **ROUND MIXED CUT**
Measurements **9.13 - 9.11 X 5.63 MM**

GRADING RESULTS

Carat Weight **3.17 CARATS**
Color Grade **FANCY LIGHT PINK**
Clarity Grade **VS 1**



ADDITIONAL GRADING INFORMATION

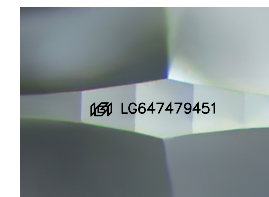
Polish **EXCELLENT**
Symmetry **EXCELLENT**
Fluorescence **SLIGHT**
Inscription(s) **IGI LG647479451**
Comments: This Laboratory Grown Diamond was created by Chemical Vapor Deposition (CVD) growth process. Indications of post-growth treatment.



IGI

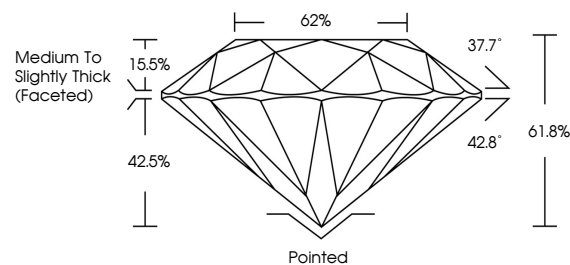
August 21, 2024
IGI Report No LG647479451
ROUND MIXED CUT
3.17 CARATS
Carat Weight
Color Grade **FANCY LIGHT PINK**
Clarity Grade **VS 1**
Depth **61.8%**
Table **62%**
Girdle **Medium to Slightly Thick (Faceted)**
Culet **Pointed**
Polish **EXCELLENT**
Symmetry **EXCELLENT**
Fluorescence **SLIGHT**
Inscription(s) **IGI LG647479451**

Comments: This Laboratory Grown Diamond was created by Chemical Vapor Deposition (CVD) growth process. Indications of post-growth treatment.

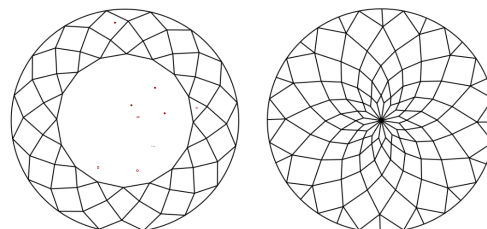


Sample Image Used

PROPORTIONS



CLARITY CHARACTERISTICS



KEY TO SYMBOLS

Red symbols indicate internal characteristics.
Green symbols indicate external characteristics.

COLOR

D E F G H I J Faint Very Light Light

CLARITY

IF	VS ¹⁻²	VS ¹⁻²	SI ¹⁻²	I ¹⁻³
Internally Flawless	Very Very Slightly Included	Very Slightly Included	Slightly Included	Included

