



ELECTRONIC COPY

LG647482900
Report verification at igi.org



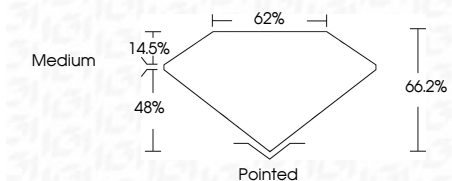
August 16, 2024
IGI Report Number LG647482900
Description LABORATORY GROWN DIAMOND

Shape and Cutting Style CUT CORNERED RECTANGULAR MODIFIED BRILLIANT

Measurements 12.59 X 8.47 X 5.61 MM

GRADING RESULTS

Carat Weight 5.26 CARATS
Color Grade F
Clarity Grade VVS 2



ADDITIONAL GRADING INFORMATION

Polish EXCELLENT
Symmetry EXCELLENT
Fluorescence NONE
Inscription(s) IGI LG647482900
Comments: This Laboratory Grown Diamond was created by Chemical Vapor Deposition (CVD) growth process. Type IIa



IGI

August 16, 2024
IGI Report Number LG647482900
Description LABORATORY GROWN DIAMOND
Shape and Cutting Style CUT CORNERED RECTANGULAR MODIFIED BRILLIANT
Measurements 12.59 X 8.47 X 5.61 MM

GRADING RESULTS

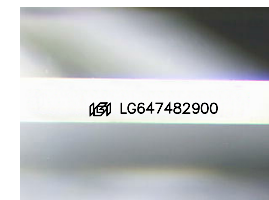
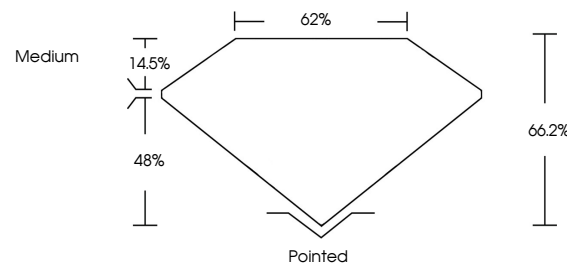
Carat Weight 5.26 CARATS
Color Grade F
Clarity Grade VVS 2

ADDITIONAL GRADING INFORMATION

Polish EXCELLENT
Symmetry EXCELLENT
Fluorescence NONE
Inscription(s) IGI LG647482900

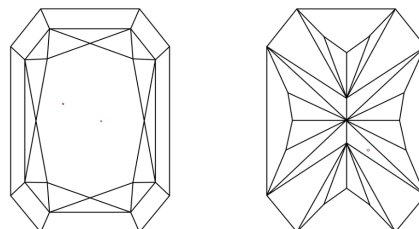
Comments: This Laboratory Grown Diamond was created by Chemical Vapor Deposition (CVD) growth process. Type IIa

PROPORTIONS



Sample Image Used

CLARITY CHARACTERISTICS



KEY TO SYMBOLS

Red symbols indicate internal characteristics.
Green symbols indicate external characteristics.

COLOR

D E F G H I J Faint Very Light Light

CLARITY

IF VS 1-2 VS 1-2 SI 1-2 I 1-3
Internally Flawless Very Very Slightly Included Very Slightly Included Slightly Included Included

August 16, 2024
IGI Report No LG647482900
CUT CORNERED RECT. MODIFIED BRILLIANT
5.26 CARATS F
12.59 X 8.47 X 5.61 MM
VVS 2 66.2% 62%
Medium
Pointed
EXCELLENT EXCELLENT
NONE
IGI LG647482900

Comments: This Laboratory Grown Diamond was created by Chemical Vapor Deposition (CVD) growth process. Type IIa