



**ELECTRONIC COPY**

LG647483095  
Report verification at igi.org



September 2, 2024  
IGI Report Number **LG647483095**  
Description **LABORATORY GROWN DIAMOND**  
Shape and Cutting Style **CUT CORNERED  
RECTANGULAR MODIFIED  
BRILLIANT**  
Measurements **16.25 X 11.09 X 6.80 MM**  
**GRADING RESULTS**  
Carat Weight **11.21 CARATS**  
Color Grade **FANCY VIVID RED**  
Clarity Grade **VS 1**

September 2, 2024  
IGI Report Number **LG647483095**  
Description **LABORATORY GROWN DIAMOND**  
Shape and Cutting Style **CUT CORNERED RECTANGULAR  
MODIFIED BRILLIANT**  
Measurements **16.25 X 11.09 X 6.80 MM**

**GRADING RESULTS**

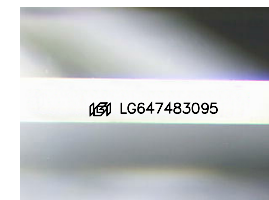
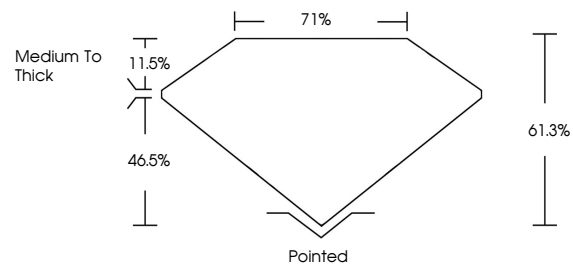
Carat Weight **11.21 CARATS**  
Color Grade **FANCY VIVID RED**  
Clarity Grade **VS 1**

**ADDITIONAL GRADING INFORMATION**

Polish **EXCELLENT**  
Symmetry **EXCELLENT**  
Fluorescence **SLIGHT**  
Inscription(s) **IGI LG647483095**

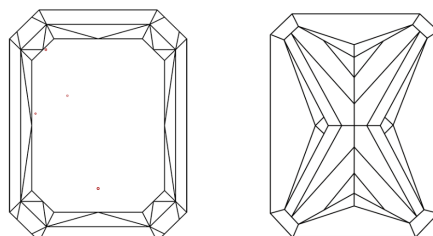
Comments: This Laboratory Grown Diamond was created by Chemical Vapor Deposition (CVD) growth process. Indications of post-growth treatment.

**PROPORTIONS**



Sample Image Used

**CLARITY CHARACTERISTICS**



**KEY TO SYMBOLS**

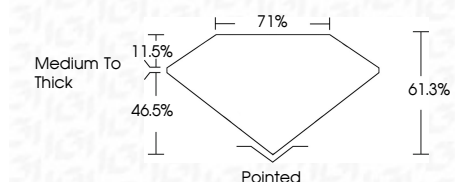
Red symbols indicate internal characteristics.  
Green symbols indicate external characteristics.

**COLOR**

D E F G H I J Faint Very Light Light

**CLARITY**

IF	VS <sup>1-2</sup>	VS <sup>1-2</sup>	SI <sup>1-2</sup>	I <sup>1-3</sup>
Internally Flawless	Very Very Slightly Included	Very Slightly Included	Slightly Included	Included



**ADDITIONAL GRADING INFORMATION**

Polish **EXCELLENT**  
Symmetry **EXCELLENT**  
Fluorescence **SLIGHT**  
Inscription(s) **IGI LG647483095**  
Comments: This Laboratory Grown Diamond was created by Chemical Vapor Deposition (CVD) growth process. Indications of post-growth treatment.



September 2, 2024  
IGI Report No LG647483095  
CUT CORNERED RECT. MODIFIED BRILLIANT  
16.25 X 11.09 X 6.80 MM  
11.21 CARATS  
FANCY VIVID RED  
VS 1  
61.3%  
71%  
Medium to Thick  
Pointed  
EXCELLENT  
EXCELLENT  
SLIGHT  
IGI LG647483095  
Comments: This Laboratory Grown Diamond was created by Chemical Vapor Deposition (CVD) growth process. Indications of post-growth treatment.