



**ELECTRONIC COPY**

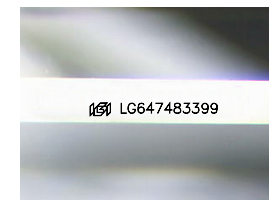
LG647483399  
Report verification at igi.org



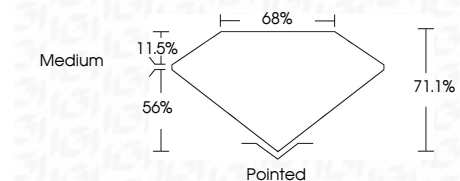
August 16, 2024  
IGI Report Number **LG647483399**  
Description **LABORATORY GROWN DIAMOND**  
Shape and Cutting Style **PRINCESS CUT**  
Measurements **6.53 X 6.51 X 4.63 MM**

**GRADING RESULTS**

Carat Weight **1.76 CARAT**  
Color Grade **E**  
Clarity Grade **VS 2**



Sample Image Used



**ADDITIONAL GRADING INFORMATION**

Polish **EXCELLENT**  
Symmetry **EXCELLENT**  
Fluorescence **NONE**  
Inscription(s) **IGI LG647483399**  
Comments: This Laboratory Grown Diamond was created by Chemical Vapor Deposition (CVD) growth process. Type IIa



August 16, 2024  
IGI Report No. LG647483399  
**PRINCESS CUT**  
6.53 X 6.51 X 4.63 MM  
1.76 CARAT  
E  
VS 2  
71.1%  
56%  
Medium  
Pointed  
EXCELLENT  
EXCELLENT  
NONE  
IGI LG647483399  
Comments: This Laboratory Grown Diamond was created by Chemical Vapor Deposition (CVD) growth process. Type IIa

**LABORATORY GROWN DIAMOND REPORT**

August 16, 2024  
IGI Report Number **LG647483399**  
Description **LABORATORY GROWN DIAMOND**  
Shape and Cutting Style **PRINCESS CUT**  
Measurements **6.53 X 6.51 X 4.63 MM**

**GRADING RESULTS**

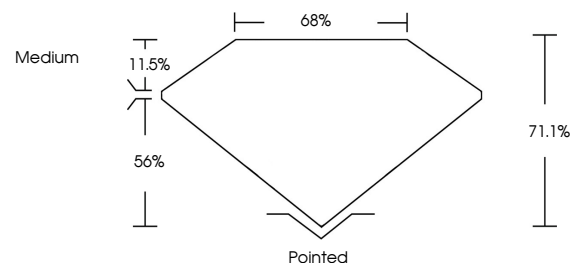
Carat Weight **1.76 CARAT**  
Color Grade **E**  
Clarity Grade **VS 2**

**ADDITIONAL GRADING INFORMATION**

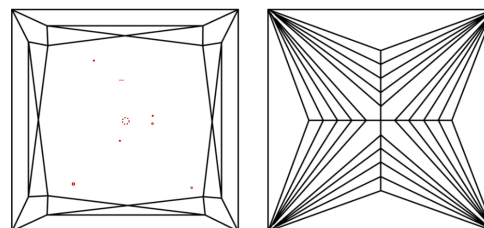
Polish **EXCELLENT**  
Symmetry **EXCELLENT**  
Fluorescence **NONE**  
Inscription(s) **IGI LG647483399**

Comments: This Laboratory Grown Diamond was created by Chemical Vapor Deposition (CVD) growth process. Type IIa

**PROPORTIONS**



**CLARITY CHARACTERISTICS**



**KEY TO SYMBOLS**

Red symbols indicate internal characteristics.  
Green symbols indicate external characteristics.

**COLOR**

D E F G H I J Faint Very Light Light

**CLARITY**

IF	VS <sup>1-2</sup>	VS <sup>1-2</sup>	SI <sup>1-2</sup>	I <sup>1-3</sup>
Internally Flawless	Very Very Slightly Included	Very Slightly Included	Slightly Included	Included

