



**ELECTRONIC COPY**

LG647484219  
Report verification at igi.org



August 21, 2024

IGI Report Number **LG647484219**

Description **LABORATORY GROWN DIAMOND**

Shape and Cutting Style **EMERALD CUT**

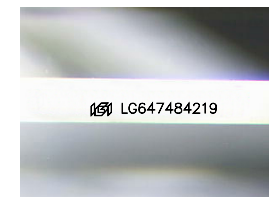
Measurements **8.03 X 5.32 X 3.59 MM**

**GRADING RESULTS**

Carat Weight **1.51 CARAT**

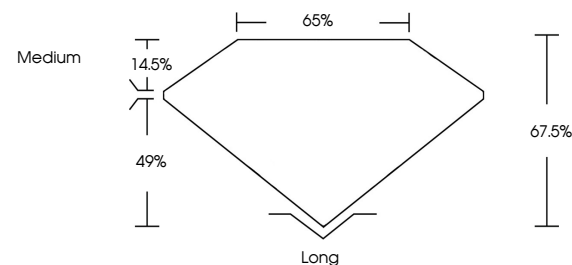
Color Grade **FANCY INTENSE PINK**

Clarity Grade **VS 1**

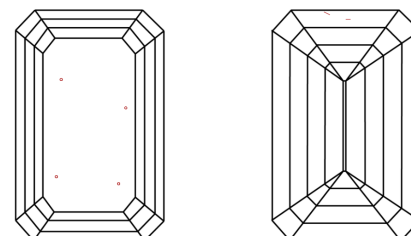


Sample Image Used

**PROPORTIONS**



**CLARITY CHARACTERISTICS**



**KEY TO SYMBOLS**

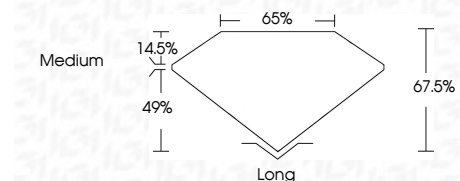
Red symbols indicate internal characteristics.  
Green symbols indicate external characteristics.

**COLOR**

D E F G H I J Faint Very Light Light

**CLARITY**

IF	VS <sup>1-2</sup>	VS <sup>1-2</sup>	SI <sup>1-2</sup>	I <sup>1-3</sup>
Internally Flawless	Very Very Slightly Included	Very Slightly Included	Slightly Included	Included



**ADDITIONAL GRADING INFORMATION**

Polish **EXCELLENT**

Symmetry **EXCELLENT**

Fluorescence **SLIGHT**

Inscription(s) **IGI LG647484219**

Comments: This Laboratory Grown Diamond was created by Chemical Vapor Deposition (CVD) growth process. Indications of post-growth treatment.



August 21, 2024  
IGI Report No LG647484219  
**EMERALD CUT**

**1.51 CARAT**  
Carat Weight  
**FANCY INTENSE PINK**  
Color Grade

**VS 1**  
Clarity Grade  
**67.5%**  
Depth  
**65%**  
Girdle  
**Medium**

**Long**  
Cutlet  
**EXCELLENT**  
Polish  
**EXCELLENT**  
Symmetry  
**SLIGHT**  
Fluorescence  
Inscription(s)  
**IGI LG647484219**

Comments: This Laboratory Grown Diamond was created by Chemical Vapor Deposition (CVD) growth process. Indications of post-growth treatment.