



**ELECTRONIC COPY**

LG647484220  
Report verification at igi.org



August 21, 2024

IGI Report Number **LG647484220**

Description **LABORATORY GROWN DIAMOND**

Shape and Cutting Style **EMERALD CUT**

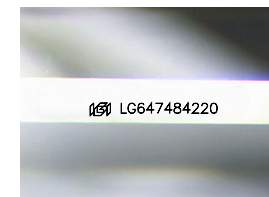
Measurements **7.89 X 5.30 X 3.54 MM**

**GRADING RESULTS**

Carat Weight **1.42 CARAT**

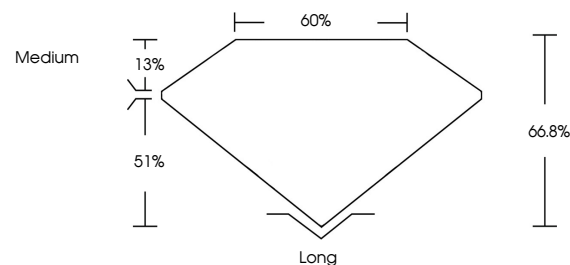
Color Grade **FANCY INTENSE PINK**

Clarity Grade **VS 1**

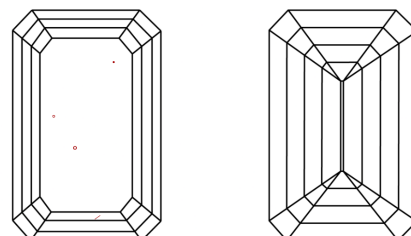


Sample Image Used

**PROPORTIONS**



**CLARITY CHARACTERISTICS**



**KEY TO SYMBOLS**

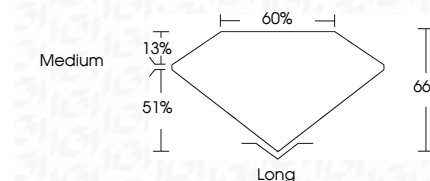
Red symbols indicate internal characteristics.  
Green symbols indicate external characteristics.

**COLOR**

D E F G H I J Faint Very Light Light

**CLARITY**

IF	VS <sup>1-2</sup>	VS <sup>1-2</sup>	SI <sup>1-2</sup>	I <sup>1-3</sup>
Internally Flawless	Very Very Slightly Included	Very Slightly Included	Slightly Included	Included



**ADDITIONAL GRADING INFORMATION**

Polish **EXCELLENT**

Symmetry **EXCELLENT**

Fluorescence **SLIGHT**

Inscription(s) **IGI LG647484220**

Comments: This Laboratory Grown Diamond was created by Chemical Vapor Deposition (CVD) growth process. Indications of post-growth treatment.



August 21, 2024  
IGI Report No. LG647484220  
**EMERALD CUT**  
1.42 CARAT  
FANCY INTENSE PINK  
7.89 X 5.30 X 3.54 MM  
Color Grade  
Clarity Grade  
Depth  
Table  
Girdle  
Medium  
Long  
EXCELLENT  
EXCELLENT  
SLIGHT  
IGI LG647484220  
Comments: This Laboratory Grown Diamond was created by Chemical Vapor Deposition (CVD) growth process. Indications of post-growth treatment.