



ELECTRONIC COPY

LG647496471
Report verification at igi.org



August 7, 2024

IGI Report Number **LG647496471**

Description **LABORATORY GROWN DIAMOND**

Shape and Cutting Style **CUSHION BRILLIANT**

Measurements **6.56 X 5.34 X 3.60 MM**

GRADING RESULTS

Carat Weight **1.01 CARAT**

Color Grade **D**

Clarity Grade **VVS 1**

August 7, 2024
IGI Report Number **LG647496471**
Description **LABORATORY GROWN DIAMOND**
Shape and Cutting Style **CUSHION BRILLIANT**
Measurements **6.56 X 5.34 X 3.60 MM**

GRADING RESULTS

Carat Weight **1.01 CARAT**

Color Grade **D**

Clarity Grade **VVS 1**

ADDITIONAL GRADING INFORMATION

Polish **EXCELLENT**

Symmetry **EXCELLENT**

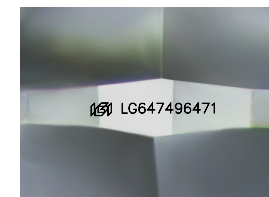
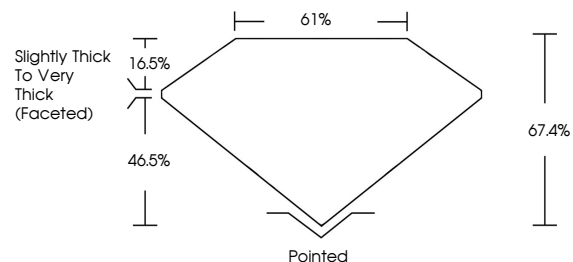
Fluorescence **NONE**

Inscription(s) **IGI LG647496471**

Comments: As Grown - No indication of post-growth treatment.

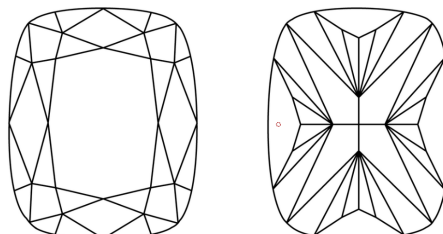
This Laboratory Grown Diamond was created by High Pressure High Temperature (HPHT) growth process. Type II

PROPORTIONS



Sample Image Used

CLARITY CHARACTERISTICS



KEY TO SYMBOLS

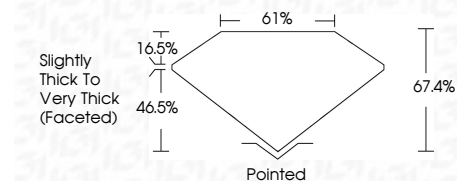
Red symbols indicate internal characteristics.
Green symbols indicate external characteristics.

COLOR

D E F G H I J Faint Very Light Light

CLARITY

IF	VS ¹⁻²	VS ¹⁻²	SI ¹⁻²	I ¹⁻³
Internally Flawless	Very Very Slightly Included	Very Slightly Included	Slightly Included	Included



ADDITIONAL GRADING INFORMATION

Polish **EXCELLENT**

Symmetry **EXCELLENT**

Fluorescence **NONE**

Inscription(s) **IGI LG647496471**

Comments: As Grown - No indication of post-growth treatment.

This Laboratory Grown Diamond was created by High Pressure High Temperature (HPHT) growth process. Type II



August 7, 2024
IGI Report No LG647496471
CUSHION BRILLIANT
6.56 X 5.34 X 3.60 MM
Carat Weight 1.01 CARAT
Color Grade D
Clarity Grade VVS 1
Depth 67.4%
Table 61%
Girdle Slightly Thick To Very Thick (Faceted)
Culet Pointed
Polish EXCELLENT
Symmetry EXCELLENT
Fluorescence NONE
Inscription(s) IGI LG647496471
Comments: As Grown - No indication of post-growth treatment.
This Laboratory Grown Diamond was created by High Pressure High Temperature (HPHT) growth process. Type II