



**INTERNATIONAL  
GEMOLOGICAL  
INSTITUTE**

**ELECTRONIC COPY**

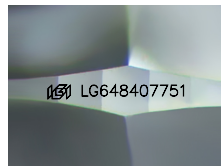
**LG648407751**



August 15, 2024  
**IGI Report Number** LG648407751  
**CUSHION BRILLIANT**  
**LABORATORY GROWN DIAMOND**  
**7.03 X 5.10 X 3.38 MM**  
**Carat Weight** 0.96 CARAT  
**Color Grade** E  
**Clarity Grade** VS 1  
**Polish** EXCELLENT  
**Symmetry** EXCELLENT  
**Fluorescence** NONE  
**Inscription(s)** IGI LG648407751

**LABORATORY GROWN DIAMOND REPORT**

August 15, 2024  
 IGI Report Number **LG648407751**  
 Description **LABORATORY GROWN DIAMOND**  
 Shape and Cutting Style **CUSHION BRILLIANT**  
 Measurements **7.03 X 5.10 X 3.38 MM**



Sample Image Used

Comments: This Laboratory Grown Diamond was created by Chemical Vapor Deposition (CVD) growth process. Type IIa

**GRADING RESULTS**

**Carat Weight** 0.96 CARAT  
**Color Grade** E  
**Clarity Grade** VS 1

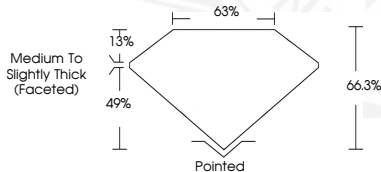
**ADDITIONAL GRADING INFORMATION**

**Polish** EXCELLENT  
**Symmetry** EXCELLENT  
**Fluorescence** NONE  
**Inscription(s)** IGI LG648407751

Comments: This Laboratory Grown Diamond was created by Chemical Vapor Deposition (CVD) growth process. Type IIa



August 15, 2024  
**IGI Report Number** LG648407751  
**CUSHION BRILLIANT**  
**LABORATORY GROWN DIAMOND**  
**7.03 X 5.10 X 3.38 MM**  
**Carat Weight** 0.96 CARAT  
**Color Grade** E  
**Clarity Grade** VS 1  
**Polish** EXCELLENT  
**Symmetry** EXCELLENT  
**Fluorescence** NONE  
**Inscription(s)** IGI LG648407751



Comments: This Laboratory Grown Diamond was created by Chemical Vapor Deposition (CVD) growth process. Type IIa

THIS DOCUMENT WAS PRODUCED WITH THE FOLLOWING SECURITY MEASURES: SPECIAL DOCUMENT PAPER, INK SCREENS, WATERMARK, BACKGROUND DESIGN, HOLOGRAM AND OTHER SECURITY FEATURES NOT LISTED AND DO EXCEED DOCUMENT SECURITY INDUSTRY GUIDELINES.

For terms & conditions and to verify this report, please visit [www.igi.org](http://www.igi.org)