



**INTERNATIONAL
GEMOLOGICAL
INSTITUTE**

ELECTRONIC COPY

LG648409057



August 17, 2024
IGI Report Number LG648409057
ROUND BRILLIANT
LABORATORY GROWN DIAMOND
4.94 - 4.96 X 2.98 MM
 Carat Weight **0.44 CARAT**
 Color Grade **D**
 Clarity Grade **VVS 2**
 Cut Grade **IDEAL**
 Polish **EXCELLENT**
 Symmetry **EXCELLENT**
 Fluorescence **NONE**
 Inscription(s) **IGI LG648409057**

LABORATORY GROWN DIAMOND REPORT

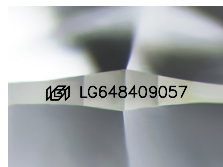
August 17, 2024
 IGI Report Number **LG648409057**
 Description **LABORATORY GROWN DIAMOND**
 Shape and Cutting Style **ROUND BRILLIANT**
 Measurements **4.94 - 4.96 X 2.98 MM**



HEARTS & ARROWS

GRADING RESULTS

Carat Weight **0.44 CARAT**
 Color Grade **D**
 Clarity Grade **VVS 2**
 Cut Grade **IDEAL**

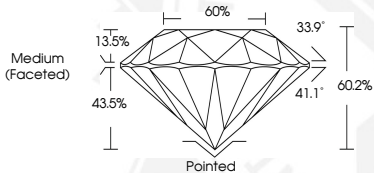


Sample Image Used

ADDITIONAL GRADING INFORMATION

Polish **EXCELLENT**
 Symmetry **EXCELLENT**
 Fluorescence **NONE**
 Inscription(s) **IGI LG648409057**

Comments: **HEARTS & ARROWS**
 This Laboratory Grown Diamond was created by Chemical Vapor Deposition (CVD) growth process.
 Type Iia



August 17, 2024
IGI Report Number LG648409057
ROUND BRILLIANT
LABORATORY GROWN DIAMOND
4.94 - 4.96 X 2.98 MM
 Carat Weight **0.44 CARAT**
 Color Grade **D**
 Clarity Grade **VVS 2**
 Cut Grade **IDEAL**
 Polish **EXCELLENT**
 Symmetry **EXCELLENT**
 Fluorescence **NONE**
 Inscription(s) **IGI LG648409057**
 Comments: **HEARTS & ARROWS** This Laboratory Grown Diamond was created by Chemical Vapor Deposition (CVD) growth process.
 Type Iia

THIS DOCUMENT WAS PRODUCED WITH THE FOLLOWING SECURITY MEASURES: SPECIAL DOCUMENT PAPER, INK SCREENS, WATERMARK, BACKGROUND DESIGNS, HOLOGRAM AND OTHER SECURITY FEATURES NOT LISTED AND DO EXCEED DOCUMENT SECURITY INDUSTRY GUIDELINES.

For terms & conditions and to verify this report, please visit www.igi.org