



ELECTRONIC COPY

LG648410366
Report verification at igi.org



August 15, 2024

IGI Report Number **LG648410366**

Description **LABORATORY GROWN DIAMOND**

Shape and Cutting Style **ROUND BRILLIANT**

Measurements **8.02 - 8.06 X 4.84 MM**

GRADING RESULTS

Carat Weight **1.89 CARAT**

Color Grade **H**

Clarity Grade **VS 2**

Cut Grade **IDEAL**

August 15, 2024
IGI Report Number **LG648410366**
Description **LABORATORY GROWN DIAMOND**
Shape and Cutting Style **ROUND BRILLIANT**
Measurements **8.02 - 8.06 X 4.84 MM**

GRADING RESULTS

Carat Weight **1.89 CARAT**

Color Grade **H**

Clarity Grade **VS 2**

Cut Grade **IDEAL**

ADDITIONAL GRADING INFORMATION

Polish **EXCELLENT**

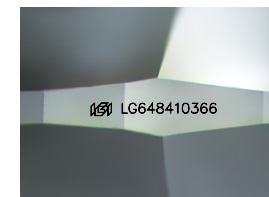
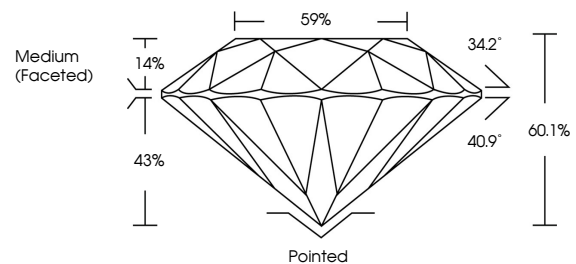
Symmetry **EXCELLENT**

Fluorescence **NONE**

Inscription(s) **LG648410366**

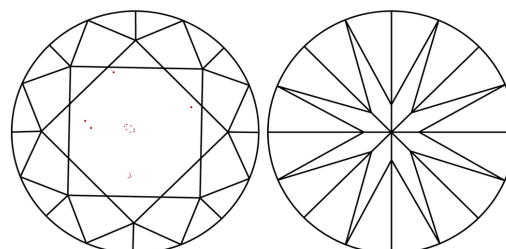
Comments: This Laboratory Grown Diamond was created by Chemical Vapor Deposition (CVD) growth process.
Type IIa

PROPORTIONS



Sample Image Used

CLARITY CHARACTERISTICS



KEY TO SYMBOLS

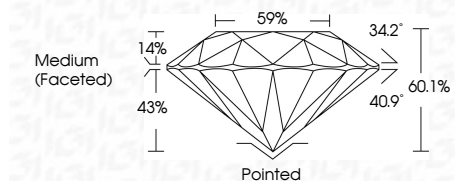
Red symbols indicate internal characteristics.
Green symbols indicate external characteristics.

COLOR

D E F G H I J Faint Very Light Light

CLARITY

IF	VS ¹⁻²	VS ¹⁻²	SI ¹⁻²	I ¹⁻³
Internally Flawless	Very Very Slightly Included	Very Slightly Included	Slightly Included	Included



ADDITIONAL GRADING INFORMATION

Polish **EXCELLENT**

Symmetry **EXCELLENT**

Fluorescence **NONE**

Inscription(s) **LG648410366**

Comments: This Laboratory Grown Diamond was created by Chemical Vapor Deposition (CVD) growth process.
Type IIa



August 15, 2024	IGI Report No LG648410366	1.89 CARAT	H	VS 2	IDEAL	60.1%	59%	Medium (Faceted)	Pointed	EXCELLENT	EXCELLENT	NONE	LG648410366
ROUND BRILLIANT	8.02 - 8.06 X 4.84 MM	Carat Weight	Color Grade	Clarity Grade	Cut Grade	Depth	Table	Girdle	Culet	Polish	Symmetry	Fluorescence	Inscription(s)

Comments: This Laboratory Grown Diamond was created by Chemical Vapor Deposition (CVD) growth process.
Type IIa