



ELECTRONIC COPY

LG648414247
Report verification at igi.org



August 23, 2024
IGI Report Number **LG648414247**
Description **LABORATORY GROWN DIAMOND**
Shape and Cutting Style **PRINCESS CUT**
Measurements **6.22 X 6.22 X 4.54 MM**
GRADING RESULTS
Carat Weight **1.47 CARAT**
Color Grade **E**
Clarity Grade **VS 2**
Cut Grade **EXCELLENT**

LABORATORY GROWN DIAMOND REPORT

August 23, 2024
IGI Report Number **LG648414247**
Description **LABORATORY GROWN DIAMOND**
Shape and Cutting Style **PRINCESS CUT**
Measurements **6.22 X 6.22 X 4.54 MM**

GRADING RESULTS

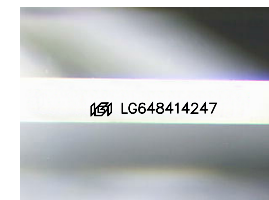
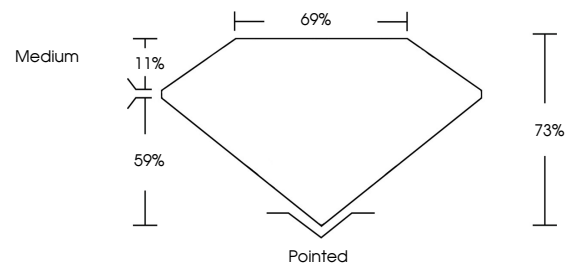
Carat Weight **1.47 CARAT**
Color Grade **E**
Clarity Grade **VS 2**
Cut Grade **EXCELLENT**

ADDITIONAL GRADING INFORMATION

Polish **EXCELLENT**
Symmetry **VERY GOOD**
Fluorescence **NONE**
Inscription(s) **IGI LG648414247**

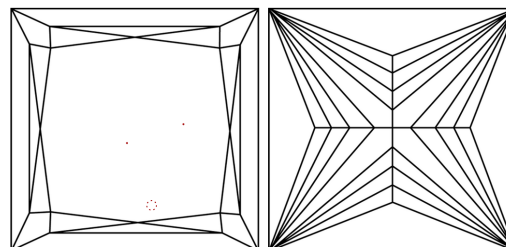
Comments: This Laboratory Grown Diamond was created by Chemical Vapor Deposition (CVD) growth process.
Type IIa

PROPORTIONS



Sample Image Used

CLARITY CHARACTERISTICS



KEY TO SYMBOLS

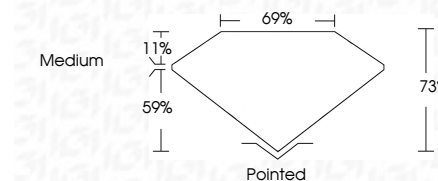
Red symbols indicate internal characteristics.
Green symbols indicate external characteristics.

COLOR

D E F G H I J Faint Very Light Light

CLARITY

| | | | | |
|---------------------|-----------------------------|------------------------|-------------------|------------------|
| IF | VS ¹⁻² | VS ¹⁻² | SI ¹⁻² | I ¹⁻³ |
| Internally Flawless | Very Very Slightly Included | Very Slightly Included | Slightly Included | Included |



ADDITIONAL GRADING INFORMATION

Polish **EXCELLENT**
Symmetry **VERY GOOD**
Fluorescence **NONE**
Inscription(s) **IGI LG648414247**
Comments: This Laboratory Grown Diamond was created by Chemical Vapor Deposition (CVD) growth process.
Type IIa



August 23, 2024
IGI Report No **LG648414247**
PRINCESS CUT
6.22 X 6.22 X 4.54 MM
Carat Weight **1.47 CARAT**
Color Grade **E**
Clarity Grade **VS 2**
Depth **73%**
Table **69%**
Girdle **Medium**
Culet **Pointed**
Polish **EXCELLENT**
Symmetry **VERY GOOD**
Fluorescence **NONE**
Inscription(s) **IGI LG648414247**
Comments: This Laboratory Grown Diamond was created by Chemical Vapor Deposition (CVD) growth process.
Type IIa