



ELECTRONIC COPY

LABORATORY GROWN DIAMOND REPORT

August 23, 2024  
IGI Report Number **LG648419257**  
Description **LABORATORY GROWN DIAMOND**  
Shape and Cutting Style **CUT CORNERED RECTANGULAR MODIFIED BRILLIANT**  
Measurements **8.87 X 6.07 X 4.12 MM**

GRADING RESULTS

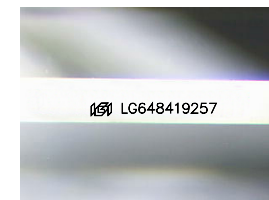
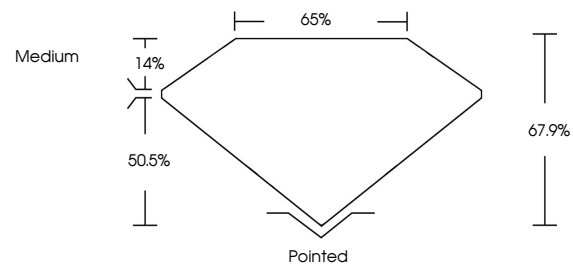
Carat Weight **1.87 CARAT**  
Color Grade **E**  
Clarity Grade **VS 1**

ADDITIONAL GRADING INFORMATION

Polish **EXCELLENT**  
Symmetry **EXCELLENT**  
Fluorescence **NONE**  
Inscription(s) **IGI LG648419257**

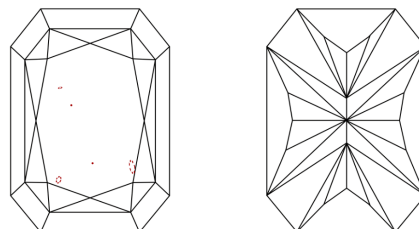
Comments: This Laboratory Grown Diamond was created by Chemical Vapor Deposition (CVD) growth process.  
Type IIa

PROPORTIONS



Sample Image Used

CLARITY CHARACTERISTICS



KEY TO SYMBOLS

Red symbols indicate internal characteristics.  
Green symbols indicate external characteristics.

COLOR

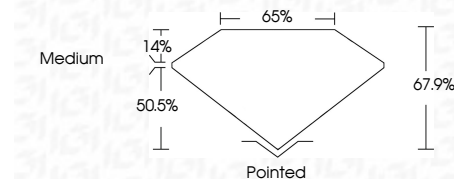
D E F G H I J Faint Very Light Light

CLARITY

IF WS<sup>1-2</sup> VS<sup>1-2</sup> SI<sup>1-2</sup> I<sup>1-3</sup>  
Internally Flawless Very Very Slightly Included Very Slightly Included Slightly Included Included



August 23, 2024  
IGI Report Number **LG648419257**  
Description **LABORATORY GROWN DIAMOND**  
Shape and Cutting Style **CUT CORNERED RECTANGULAR MODIFIED BRILLIANT**  
Measurements **8.87 X 6.07 X 4.12 MM**  
GRADING RESULTS  
Carat Weight **1.87 CARAT**  
Color Grade **E**  
Clarity Grade **VS 1**



ADDITIONAL GRADING INFORMATION

Polish **EXCELLENT**  
Symmetry **EXCELLENT**  
Fluorescence **NONE**  
Inscription(s) **IGI LG648419257**  
Comments: This Laboratory Grown Diamond was created by Chemical Vapor Deposition (CVD) growth process.  
Type IIa



IGI



August 23, 2024  
IGI Report No **LG648419257**  
**CUT CORNERED RECT. MODIFIED BRILLIANT**  
**8.87 X 6.07 X 4.12 MM**  
Carat Weight **1.87 CARAT**  
Color Grade **E**  
Clarity Grade **VS 1**  
Depth **50.5%**  
Table **14%**  
Girdle **Medium**  
Culet **Pointed**  
Polish **EXCELLENT**  
Symmetry **EXCELLENT**  
Fluorescence **NONE**  
Inscription(s) **IGI LG648419257**

Comments: This Laboratory Grown Diamond was created by Chemical Vapor Deposition (CVD) growth process.  
Type IIa