



**ELECTRONIC COPY**

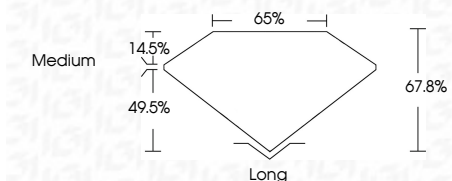
LG648420480  
Report verification at [igi.org](http://igi.org)



August 16, 2024  
IGI Report Number **LG648420480**  
Description **LABORATORY GROWN DIAMOND**  
Shape and Cutting Style **EMERALD CUT**  
Measurements **8.94 X 6.40 X 4.34 MM**

**GRADING RESULTS**

Carat Weight **2.46 CARATS**  
Color Grade **E**  
Clarity Grade **VS 1**



**ADDITIONAL GRADING INFORMATION**

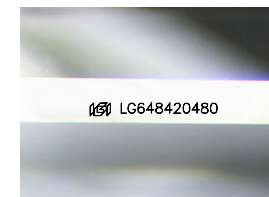
Polish **EXCELLENT**  
Symmetry **EXCELLENT**  
Fluorescence **NONE**  
Inscription(s) **(IGI) LG648420480**  
Comments: This Laboratory Grown Diamond was created by Chemical Vapor Deposition (CVD) growth process.  
Type IIa



**IGI**

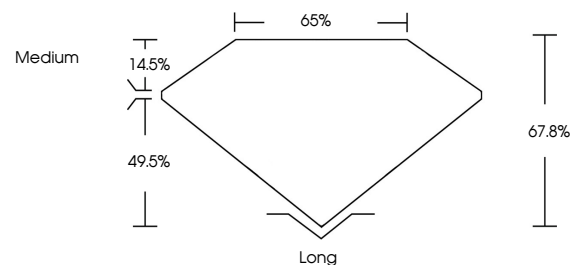
August 16, 2024  
IGI Report No. **LG648420480**  
**EMERALD CUT**  
8.94 X 6.40 X 4.34 MM  
2.46 CARATS  
E  
VS 1  
67.8%  
65%  
Medium  
Long  
EXCELLENT  
EXCELLENT  
NONE  
(IGI) LG648420480

Comments: This Laboratory Grown Diamond was created by Chemical Vapor Deposition (CVD) growth process.  
Type IIa

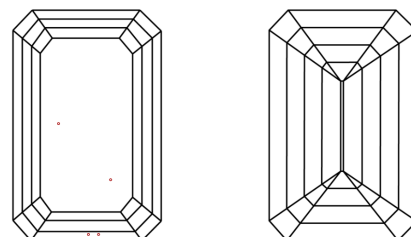


Sample Image Used

**PROPORTIONS**



**CLARITY CHARACTERISTICS**



**KEY TO SYMBOLS**

Red symbols indicate internal characteristics.  
Green symbols indicate external characteristics.

**COLOR**

D E F G H I J Faint Very Light Light

**CLARITY**

| IF                  | VS <sup>1-2</sup>           | VS <sup>1-2</sup>      | SI <sup>1-2</sup> | I <sup>1-3</sup> |
|---------------------|-----------------------------|------------------------|-------------------|------------------|
| Internally Flawless | Very Very Slightly Included | Very Slightly Included | Slightly Included | Included         |

