



ELECTRONIC COPY

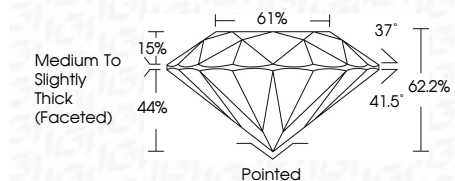
LG648422543
Report verification at igi.org



August 17, 2024
IGI Report Number LG648422543
Description LABORATORY GROWN DIAMOND
Shape and Cutting Style ROUND BRILLIANT
Measurements 6.41 - 6.47 X 4.01 MM

GRADING RESULTS

Carat Weight 1.03 CARAT
Color Grade F
Clarity Grade VS 2
Cut Grade VERY GOOD

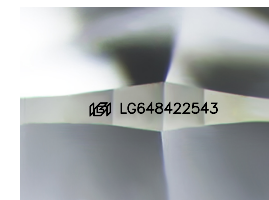


ADDITIONAL GRADING INFORMATION

Polish VERY GOOD
Symmetry VERY GOOD
Fluorescence NONE
Inscription(s) IGI LG648422543
Comments: This Laboratory Grown Diamond was created by Chemical Vapor Deposition (CVD) growth process. Type IIa

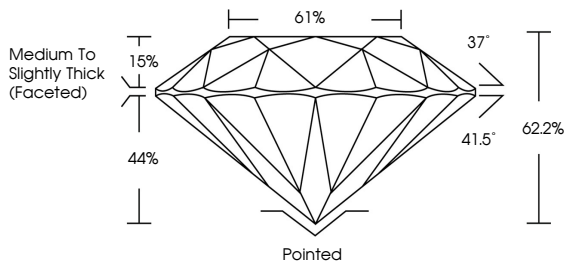


August 17, 2024
IGI Report No LG648422543
ROUND BRILLIANT
6.41 - 6.47 X 4.01 MM
1.03 CARAT
F
Color Grade
VS 2
Clarity Grade
62.2%
Depth
61%
Table
Medium To Slightly Thick (Faceted)
Pointed
VERY GOOD
VERY GOOD
Symmetry
NONE
Fluorescence
IGI LG648422543
Inscription(s)
Comments: This Laboratory Grown Diamond was created by Chemical Vapor Deposition (CVD) growth process. Type IIa

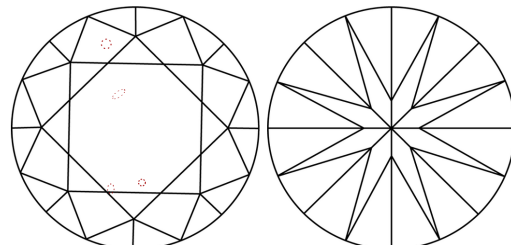


Sample Image Used

PROPORTIONS



CLARITY CHARACTERISTICS



KEY TO SYMBOLS

Red symbols indicate internal characteristics.
Green symbols indicate external characteristics.

COLOR

Table with color grades: D, E, F, G, H, I, J, Faint, Very Light, Light

CLARITY

Table with clarity grades: IF, WS 1-2, VS 1-2, SI 1-2, I 1-3, Internally Flawless, Very Very Slightly Included, Very Slightly Included, Slightly Included, Included

