



ELECTRONIC COPY

LABORATORY GROWN DIAMOND REPORT

August 16, 2024
IGI Report Number LG648422815
Description LABORATORY GROWN DIAMOND
Shape and Cutting Style EMERALD CUT
Measurements 9.94 X 6.83 X 4.60 MM

GRADING RESULTS

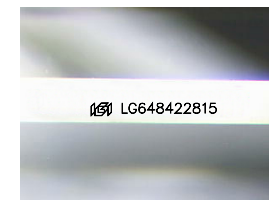
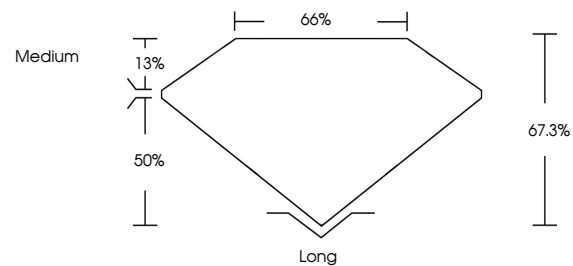
Carat Weight 3.13 CARATS
Color Grade G
Clarity Grade VVS 2

ADDITIONAL GRADING INFORMATION

Polish EXCELLENT
Symmetry EXCELLENT
Fluorescence NONE
Inscription(s) IGI LG648422815

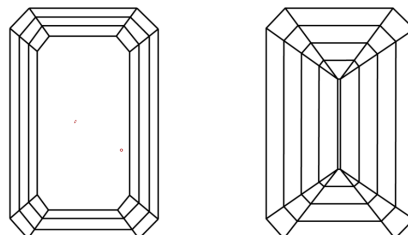
Comments: This Laboratory Grown Diamond was created by Chemical Vapor Deposition (CVD) growth process.
Type IIa

PROPORTIONS



Sample Image Used

CLARITY CHARACTERISTICS



KEY TO SYMBOLS

Red symbols indicate internal characteristics.
Green symbols indicate external characteristics.

COLOR

D E F G H I J Faint Very Light Light

CLARITY

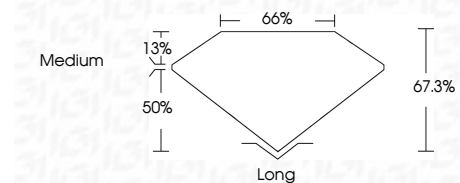
IF VS 1-2 VS 1-2 SI 1-2 I 1-3
Internally Flawless Very Very Slightly Included Very Slightly Included Slightly Included Included



August 16, 2024
IGI Report Number LG648422815
Description LABORATORY GROWN DIAMOND
Shape and Cutting Style EMERALD CUT
Measurements 9.94 X 6.83 X 4.60 MM

GRADING RESULTS

Carat Weight 3.13 CARATS
Color Grade G
Clarity Grade VVS 2



ADDITIONAL GRADING INFORMATION

Polish EXCELLENT
Symmetry EXCELLENT
Fluorescence NONE
Inscription(s) IGI LG648422815
Comments: This Laboratory Grown Diamond was created by Chemical Vapor Deposition (CVD) growth process.
Type IIa



IGI



August 16, 2024
IGI Report No LG648422815
EMERALD CUT
9.94 X 6.83 X 4.60 MM
3.13 CARATS
Color Grade G
Clarity Grade VVS 2
Depth 67.3%
Table 65%
Girdle Medium
Culet Long
Polish EXCELLENT
Symmetry EXCELLENT
Fluorescence NONE
Inscription(s) IGI LG648422815
Comments: This Laboratory Grown Diamond was created by Chemical Vapor Deposition (CVD) growth process.
Type IIa