



**INTERNATIONAL  
GEMOLOGICAL  
INSTITUTE**

**ELECTRONIC COPY**

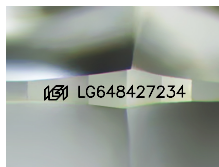
**LG648427234**



August 16, 2024  
IGI Report Number **LG648427234**  
**ROUND BRILLIANT**  
**LABORATORY GROWN DIAMOND**  
**5.22 - 5.24 X 3.17 MM**  
Carat Weight **0.52 CARAT**  
Color Grade **D**  
Clarity Grade **SI 1**  
Cut Grade **IDEAL**  
Polish **EXCELLENT**  
Symmetry **EXCELLENT**  
Fluorescence **NONE**  
Inscription(s) **IGI LG648427234**

**LABORATORY GROWN DIAMOND REPORT**

August 16, 2024  
IGI Report Number **LG648427234**  
Description **LABORATORY GROWN DIAMOND**  
Shape and Cutting Style **ROUND BRILLIANT**  
Measurements **5.22 - 5.24 X 3.17 MM**



Sample Image Used

Comments: This Laboratory Grown Diamond was created by Chemical Vapor Deposition (CVD) growth process. Type IIa

**GRADING RESULTS**

Carat Weight **0.52 CARAT**  
Color Grade **D**  
Clarity Grade **SI 1**  
Cut Grade **IDEAL**

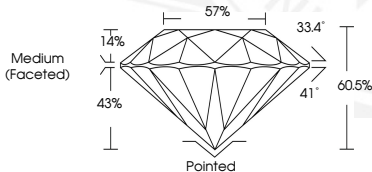
**ADDITIONAL GRADING INFORMATION**

Polish **EXCELLENT**  
Symmetry **EXCELLENT**  
Fluorescence **NONE**  
Inscription(s) **IGI LG648427234**

Comments: This Laboratory Grown Diamond was created by Chemical Vapor Deposition (CVD) growth process. Type IIa



August 16, 2024  
IGI Report Number **LG648427234**  
**ROUND BRILLIANT**  
**LABORATORY GROWN DIAMOND**  
**5.22 - 5.24 X 3.17 MM**  
Carat Weight **0.52 CARAT**  
Color Grade **D**  
Clarity Grade **SI 1**  
Cut Grade **IDEAL**  
Polish **EXCELLENT**  
Symmetry **EXCELLENT**  
Fluorescence **NONE**  
Inscription(s) **IGI LG648427234**



Comments: This Laboratory Grown Diamond was created by Chemical Vapor Deposition (CVD) growth process. Type IIa

THIS DOCUMENT WAS PRODUCED WITH THE FOLLOWING SECURITY MEASURES: SPECIAL DOCUMENT PAPER, INK SCREENS, WATERMARK, BACKGROUND DESIGN, HOLOGRAM AND OTHER SECURITY FEATURES NOT LISTED AND DO EXCEED DOCUMENT SECURITY INDUSTRY GUIDELINES.

For terms & conditions and to verify this report, please visit [www.igi.org](http://www.igi.org)