



**ELECTRONIC COPY**

LG648433805  
Report verification at igi.org



August 23, 2024

IGI Report Number **LG648433805**

Description **LABORATORY GROWN DIAMOND**

Shape and Cutting Style **EMERALD CUT**

Measurements **10.60 X 7.62 X 5.32 MM**

**GRADING RESULTS**

Carat Weight **4.40 CARATS**

Color Grade **FANCY INTENSE PINK**

Clarity Grade **VS 1**

**LABORATORY GROWN DIAMOND REPORT**

August 23, 2024

IGI Report Number **LG648433805**

Description **LABORATORY GROWN DIAMOND**

Shape and Cutting Style **EMERALD CUT**

Measurements **10.60 X 7.62 X 5.32 MM**

**GRADING RESULTS**

Carat Weight **4.40 CARATS**

Color Grade **FANCY INTENSE PINK**

Clarity Grade **VS 1**

**ADDITIONAL GRADING INFORMATION**

Polish **EXCELLENT**

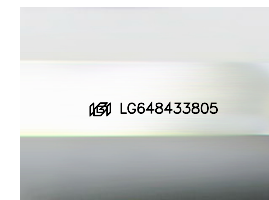
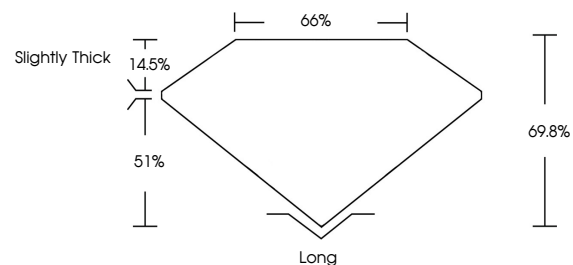
Symmetry **EXCELLENT**

Fluorescence **SLIGHT**

Inscription(s) **LG648433805**

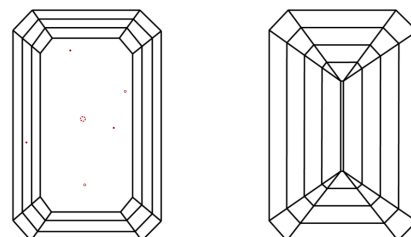
Comments: This Laboratory Grown Diamond was created by Chemical Vapor Deposition (CVD) growth process. Indications of post-growth treatment.

**PROPORTIONS**



Sample Image Used

**CLARITY CHARACTERISTICS**



**KEY TO SYMBOLS**

Red symbols indicate internal characteristics.  
Green symbols indicate external characteristics.

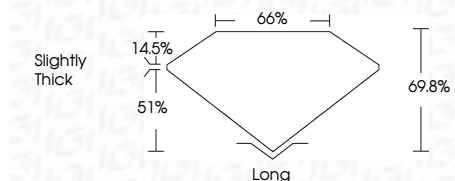
**COLOR**

D E F G H I J Faint Very Light Light

**CLARITY**

IF WS<sup>1-2</sup> VS<sup>1-2</sup> SI<sup>1-2</sup> I<sup>1-3</sup>

Internally Flawless Very Very Slightly Included Very Slightly Included Slightly Included Included



**ADDITIONAL GRADING INFORMATION**

Polish **EXCELLENT**

Symmetry **EXCELLENT**

Fluorescence **SLIGHT**

Inscription(s) **LG648433805**

Comments: This Laboratory Grown Diamond was created by Chemical Vapor Deposition (CVD) growth process. Indications of post-growth treatment.



August 23, 2024  
IGI Report No. LG648433805  
EMERALD CUT

4.40 CARATS  
FANCY INTENSE PINK  
VS 1  
69.8%  
51%  
Slightly Thick

Long  
EXCELLENT  
EXCELLENT  
SLIGHT  
 LG648433805

Comments: This Laboratory Grown Diamond was created by Chemical Vapor Deposition (CVD) growth process. Indications of post-growth treatment.