



ELECTRONIC COPY

LG648436325
Report verification at igi.org



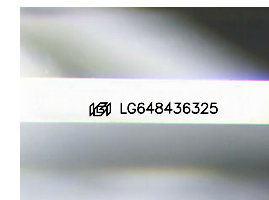
August 17, 2024
IGI Report Number **LG648436325**
Description **LABORATORY GROWN DIAMOND**

Shape and Cutting Style **CUT CORNERED
RECTANGULAR MODIFIED
BRILLIANT**

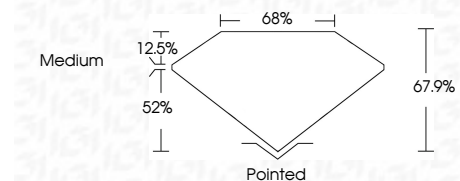
Measurements **12.12 X 8.87 X 6.02 MM**

GRADING RESULTS

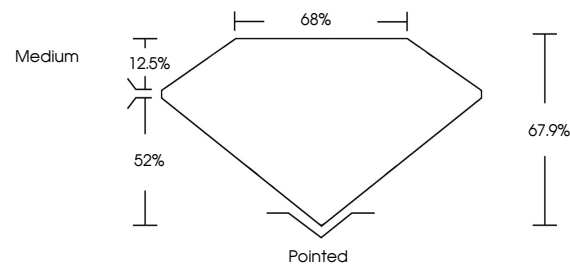
Carat Weight **5.57 CARATS**
Color Grade **H**
Clarity Grade **VVS 2**



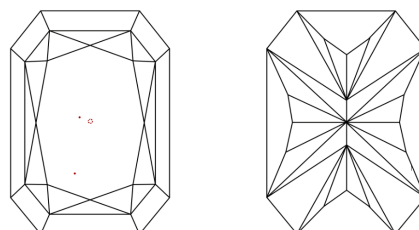
Sample Image Used



PROPORTIONS



CLARITY CHARACTERISTICS



KEY TO SYMBOLS

Red symbols indicate internal characteristics.
Green symbols indicate external characteristics.

COLOR

D E F G H I J Faint Very Light Light

CLARITY

IF	VS ¹⁻²	VS ¹⁻²	SI ¹⁻²	I ¹⁻³
Internally Flawless	Very Very Slightly Included	Very Slightly Included	Slightly Included	Included

ADDITIONAL GRADING INFORMATION

Polish **EXCELLENT**
Symmetry **EXCELLENT**
Fluorescence **NONE**
Inscription(s) **IGI LG648436325**
Comments: This Laboratory Grown Diamond was created by Chemical Vapor Deposition (CVD) growth process. Type IIa



IGI



August 17, 2024
IGI Report No LG648436325
CUT CORNERED RECT. MODIFIED BRILLIANT
12.12 X 8.87 X 6.02 MM
5.57 CARATS
H
VVS 2
5.57%
68%
Medium
Pointed
EXCELLENT
EXCELLENT
NONE
IGI LG648436325
Comments: This Laboratory Grown Diamond was created by Chemical Vapor Deposition (CVD) growth process. Type IIa