



**ELECTRONIC COPY**

LG648437911  
Report verification at igi.org



August 17, 2024

IGI Report Number **LG648437911**

Description **LABORATORY GROWN DIAMOND**

Shape and Cutting Style **ROUND BRILLIANT**

Measurements **6.83 - 6.87 X 4.28 MM**

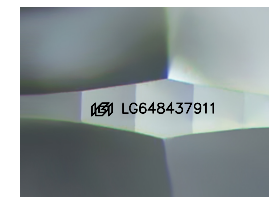
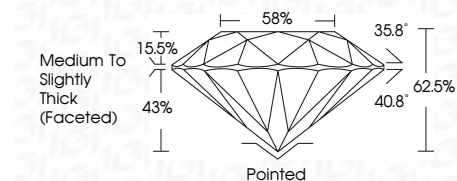
**GRADING RESULTS**

Carat Weight **1.26 CARAT**

Color Grade **D**

Clarity Grade **VVS 1**

Cut Grade **IDEAL**



Sample Image Used

**ADDITIONAL GRADING INFORMATION**

Polish **EXCELLENT**

Symmetry **EXCELLENT**

Fluorescence **NONE**

Inscription(s) **IGI LG648437911**

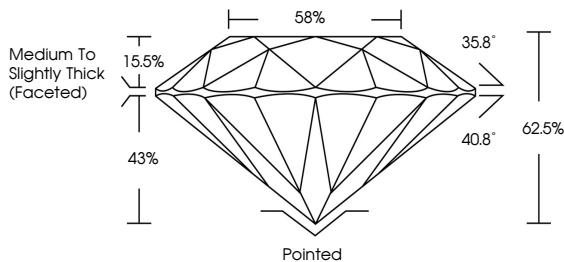
Comments: HEARTS & ARROWS  
As Grown - No indication of post-growth treatment.  
This Laboratory Grown Diamond was created by High Pressure High Temperature (HPHT) growth process.  
Type II



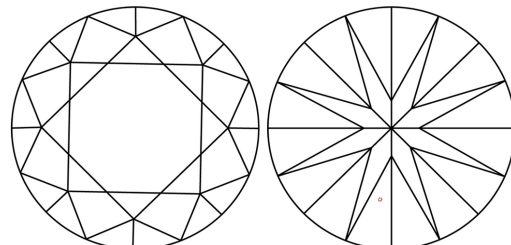
August 17, 2024	IGI Report No LG648437911	1.26 CARAT	D
ROUND BRILLIANT	6.83 - 6.87 X 4.28 MM	VVS 1	IDEAL
Color Grade	Depth	62.5%	58%
Clarity Grade	Table	40.8°	Medium To Slightly Thick (Faceted)
Cut Grade	Girdle	Pointed	EXCELLENT
Polish	Symmetry	EXCELLENT	EXCELLENT
Fluorescence	Inscription(s)	NONE	IGI LG648437911

Comments: HEARTS & ARROWS  
As Grown - No indication of post-growth treatment.  
This Laboratory Grown Diamond was created by High Pressure High Temperature (HPHT) growth process.  
Type II

**PROPORTIONS**

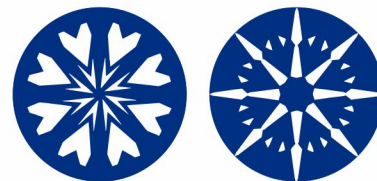


**CLARITY CHARACTERISTICS**



**KEY TO SYMBOLS**

Red symbols indicate internal characteristics.  
Green symbols indicate external characteristics.



**COLOR**

D	E	F	G	H	I	J	Faint	Very Light	Light
---	---	---	---	---	---	---	-------	------------	-------

**CLARITY**

IF	VVS <sup>1-2</sup>	VS <sup>1-2</sup>	SI <sup>1-2</sup>	I <sup>1-3</sup>
Internally Flawless	Very Very Slightly Included	Very Slightly Included	Slightly Included	Included

