



**INTERNATIONAL  
GEMOLOGICAL  
INSTITUTE**

**ELECTRONIC COPY**

**LG648438847**



**August 20, 2024**  
**IGI Report Number LG648438847**  
**ROUND BRILLIANT**  
**LABORATORY GROWN DIAMOND**  
**5.66 - 5.70 X 3.40 MM**  
 Carat Weight **0.66 CARAT**  
 Color Grade **D**  
 Clarity Grade **VS 1**  
 Cut Grade **IDEAL**  
 Polish **EXCELLENT**  
 Symmetry **EXCELLENT**  
 Fluorescence **NONE**  
 Inscription(s) **IGI LG648438847**  
 Comments: HEARTS & ARROWS This Laboratory Grown Diamond was created by Chemical Vapor Deposition (CVD) growth process. Type Iia

**LABORATORY GROWN DIAMOND REPORT**

August 20, 2024  
 IGI Report Number **LG648438847**  
 Description **LABORATORY GROWN DIAMOND**  
 Shape and Cutting Style **ROUND BRILLIANT**  
 Measurements **5.66 - 5.70 X 3.40 MM**

**GRADING RESULTS**

Carat Weight **0.66 CARAT**  
 Color Grade **D**  
 Clarity Grade **VS 1**  
 Cut Grade **IDEAL**

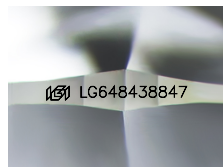
**ADDITIONAL GRADING INFORMATION**

Polish **EXCELLENT**  
 Symmetry **EXCELLENT**  
 Fluorescence **NONE**  
 Inscription(s) **IGI LG648438847**

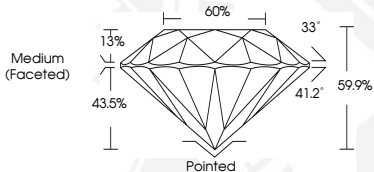
Comments: HEARTS & ARROWS  
 This Laboratory Grown Diamond was created by Chemical Vapor Deposition (CVD) growth process.  
 Type Iia



**HEARTS & ARROWS**



Sample Image Used



**August 20, 2024**  
**IGI Report Number LG648438847**  
**ROUND BRILLIANT**  
**LABORATORY GROWN DIAMOND**  
**5.66 - 5.70 X 3.40 MM**  
 Carat Weight **0.66 CARAT**  
 Color Grade **D**  
 Clarity Grade **VS 1**  
 Cut Grade **IDEAL**  
 Polish **EXCELLENT**  
 Symmetry **EXCELLENT**  
 Fluorescence **NONE**  
 Inscription(s) **IGI LG648438847**  
 Comments: HEARTS & ARROWS This Laboratory Grown Diamond was created by Chemical Vapor Deposition (CVD) growth process. Type Iia

THIS DOCUMENT WAS PRODUCED WITH THE FOLLOWING SECURITY MEASURES: SPECIAL DOCUMENT PAPER, PINK SCREENS, WATERMARK, BACKGROUND DESIGN, HOLOGRAM AND OTHER SECURITY FEATURES NOT LISTED AND DO EXCEED DOCUMENT SECURITY INDUSTRY GUIDELINES.

For terms & conditions and to verify this report, please visit [www.igi.org](http://www.igi.org)