



**ELECTRONIC COPY**

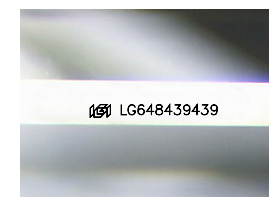
LG648439439  
Report verification at igi.org



August 22, 2024  
IGI Report Number **LG648439439**  
Description **LABORATORY GROWN DIAMOND**  
Shape and Cutting Style **EMERALD CUT**  
Measurements **10.64 X 7.19 X 4.66 MM**

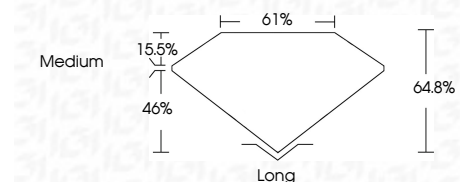
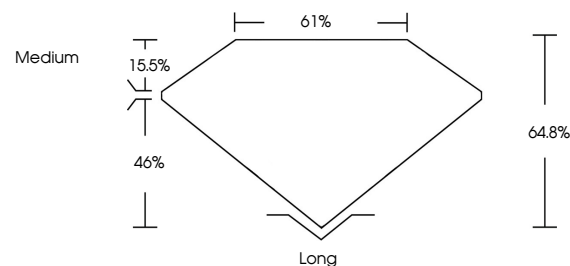
**GRADING RESULTS**

Carat Weight **3.51 CARATS**  
Color Grade **F**  
Clarity Grade **VS 1**



Sample Image Used

**PROPORTIONS**



**ADDITIONAL GRADING INFORMATION**

Polish **EXCELLENT**  
Symmetry **EXCELLENT**  
Fluorescence **NONE**  
Inscription(s) **IGI LG648439439**  
Comments: This Laboratory Grown Diamond was created by Chemical Vapor Deposition (CVD) growth process. Type IIa



**COLOR**

D E F G H I J Faint Very Light Light

**CLARITY**

IF	VS <sup>1-2</sup>	VS <sup>1-2</sup>	SI <sup>1-2</sup>	I <sup>1-3</sup>
Internally Flawless	Very Very Slightly Included	Very Slightly Included	Slightly Included	Included



August 22, 2024  
IGI Report No **LG648439439**  
**EMERALD CUT**  
**10.64 X 7.19 X 4.66 MM**  
Carat Weight **3.51 CARATS**  
Color Grade **F**  
Clarity Grade **VS 1**  
Depth **64.8%**  
Table **61%**  
Girdle **Medium**  
Culet **Long**  
Polish **EXCELLENT**  
Symmetry **EXCELLENT**  
Fluorescence **NONE**  
Inscription(s) **IGI LG648439439**  
Comments: This Laboratory Grown Diamond was created by Chemical Vapor Deposition (CVD) growth process. Type IIa