



ELECTRONIC COPY

LG648440887
Report verification at igi.org



August 23, 2024

IGI Report Number **LG648440887**

Description **LABORATORY GROWN DIAMOND**

Shape and Cutting Style **PRINCESS CUT**

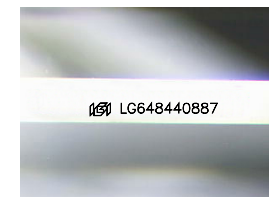
Measurements **6.28 X 6.15 X 4.70 MM**

GRADING RESULTS

Carat Weight **1.60 CARAT**

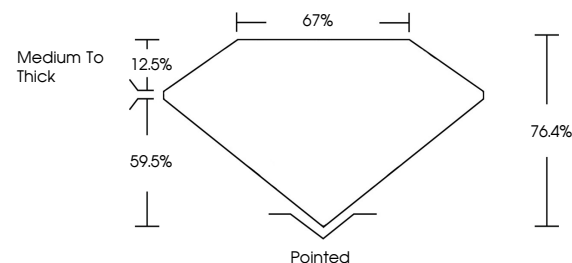
Color Grade **F**

Clarity Grade **VS 1**

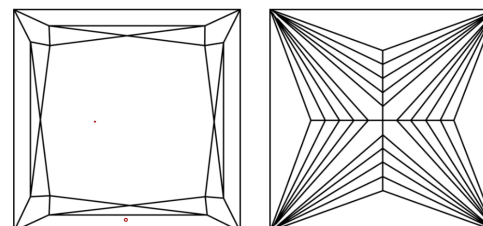


Sample Image Used

PROPORTIONS



CLARITY CHARACTERISTICS



KEY TO SYMBOLS

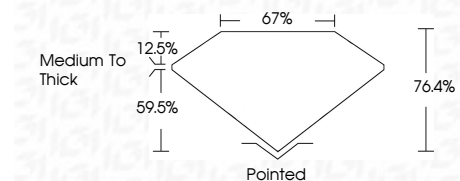
Red symbols indicate internal characteristics.
Green symbols indicate external characteristics.

COLOR

D E F G H I J Faint Very Light Light

CLARITY

IF	VS ¹⁻²	VS ¹⁻²	SI ¹⁻²	I ¹⁻³
Internally Flawless	Very Very Slightly Included	Very Slightly Included	Slightly Included	Included



ADDITIONAL GRADING INFORMATION

Polish **EXCELLENT**

Symmetry **EXCELLENT**

Fluorescence **NONE**

Inscription(s) **IGI LG648440887**

Comments: This Laboratory Grown Diamond was created by Chemical Vapor Deposition (CVD) growth process.
Type IIa



IGI



August 23, 2024
IGI Report No. LG648440887
PRINCESS CUT

6.28 X 6.15 X 4.70 MM

1.60 CARAT
F

Color Grade
Depth 76.4%
Table 12.5%
Girdle 67%
Medium to Thick

Pointed
EXCELLENT
EXCELLENT
NONE
IGI LG648440887

Culet
Polish
Symmetry
Fluorescence
Inscription(s)

Comments: This Laboratory Grown Diamond was created by Chemical Vapor Deposition (CVD) growth process.
Type IIa