



ELECTRONIC COPY

LG648442665  
Report verification at igi.org



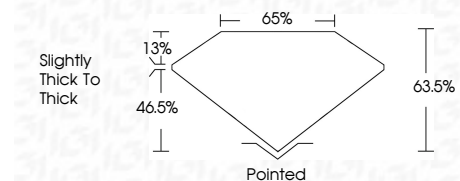
August 23, 2024  
IGI Report Number **LG648442665**  
Description **LABORATORY GROWN DIAMOND**

Shape and Cutting Style **CUT CORNERED RECTANGULAR MODIFIED BRILLIANT**

Measurements **15.44 X 10.26 X 6.51 MM**

GRADING RESULTS

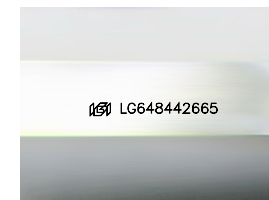
Carat Weight **9.25 CARATS**  
Color Grade **G**  
Clarity Grade **VVS 2**



ADDITIONAL GRADING INFORMATION

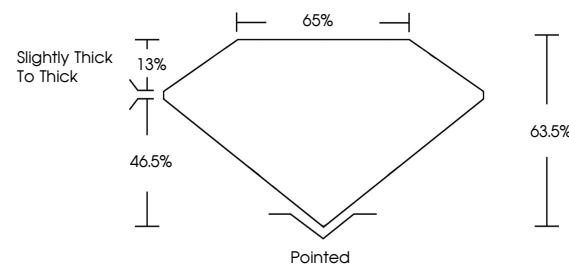
Polish **EXCELLENT**  
Symmetry **EXCELLENT**  
Fluorescence **NONE**  
Inscription(s) **IGI LG648442665**

Comments: This Laboratory Grown Diamond was created by Chemical Vapor Deposition (CVD) growth process. Type IIa

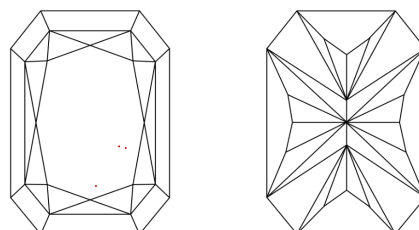


Sample Image Used

PROPORTIONS



CLARITY CHARACTERISTICS



KEY TO SYMBOLS

Red symbols indicate internal characteristics.  
Green symbols indicate external characteristics.

COLOR

D E F G H I J Faint Very Light Light

CLARITY

IF VVS<sup>1-2</sup> VS<sup>1-2</sup> SI<sup>1-2</sup> I<sup>1-3</sup>  
Internally Flawless Very Very Slightly Included Very Slightly Included Slightly Included Included



August 23, 2024  
IGI Report No **LG648442665**  
CUT CORNERED RECT. MODIFIED BRILLIANT  
15.44 X 10.26 X 6.51 MM  
Carat Weight **9.25 CARATS**  
Color Grade **G**  
Clarity Grade **VVS 2**  
Depth **63.05%**  
Table **65%**  
Girdle **Slightly thick to Thick**  
Culet **Pointed**  
Polish **EXCELLENT**  
Symmetry **EXCELLENT**  
Fluorescence **NONE**  
Inscription(s) **IGI LG648442665**  
Comments: This Laboratory Grown Diamond was created by Chemical Vapor Deposition (CVD) growth process. Type IIa