



**ELECTRONIC COPY**

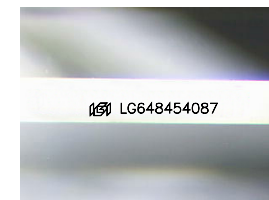
LG648454087  
Report verification at [igi.org](http://igi.org)



August 20, 2024  
IGI Report Number **LG648454087**  
Description **LABORATORY GROWN DIAMOND**  
Shape and Cutting Style **EMERALD CUT**  
Measurements **13.20 X 8.53 X 5.80 MM**

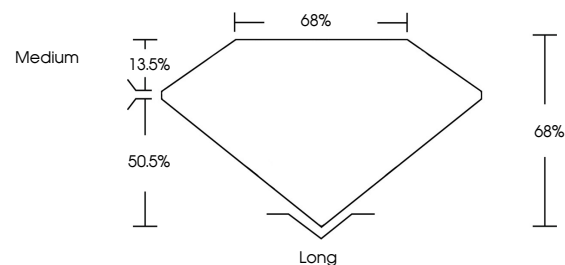
**GRADING RESULTS**

Carat Weight **7.00 CARATS**  
Color Grade **E**  
Clarity Grade **VVS 2**

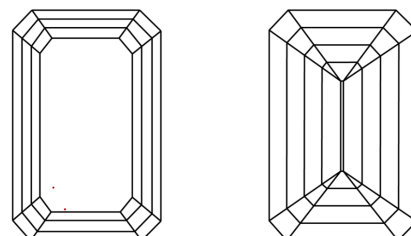


Sample Image Used

**PROPORTIONS**



**CLARITY CHARACTERISTICS**



**KEY TO SYMBOLS**

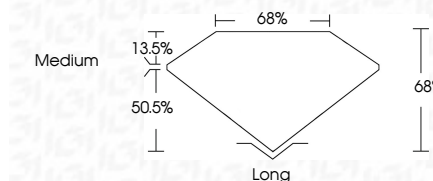
Red symbols indicate internal characteristics.  
Green symbols indicate external characteristics.

**COLOR**

D E F G H I J Faint Very Light Light

**CLARITY**

IF	VS <sup>1-2</sup>	VS <sup>1-2</sup>	SI <sup>1-2</sup>	I <sup>1-3</sup>
Internally Flawless	Very Very Slightly Included	Very Slightly Included	Slightly Included	Included



**ADDITIONAL GRADING INFORMATION**

Polish **EXCELLENT**  
Symmetry **EXCELLENT**  
Fluorescence **NONE**  
Inscription(s) **(IGI) LG648454087**  
Comments: This Laboratory Grown Diamond was created by Chemical Vapor Deposition (CVD) growth process.  
Type IIa



**IGI**



August 20, 2024  
IGI Report No. **LG648454087**  
**EMERALD CUT**  
13.20 X 8.53 X 5.80 MM  
7.00 CARATS  
E  
Color Grade  
VVS 2  
Depth 68%  
Table 65%  
Medium  
Long  
Cutlet  
Polish  
EXCELLENT  
Symmetry  
EXCELLENT  
Fluorescence  
NONE  
Inscription(s)  
(IGI) LG648454087  
Comments: This Laboratory Grown Diamond was created by Chemical Vapor Deposition (CVD) growth process.  
Type IIa