



**ELECTRONIC COPY**

LG648461473  
Report verification at igi.org



August 24, 2024

IGI Report Number **LG648461473**

Description **LABORATORY GROWN DIAMOND**

Shape and Cutting Style **EMERALD CUT**

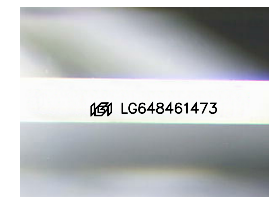
Measurements **6.86 X 4.82 X 3.25 MM**

**GRADING RESULTS**

Carat Weight **1.01 CARAT**

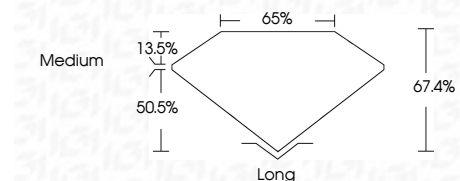
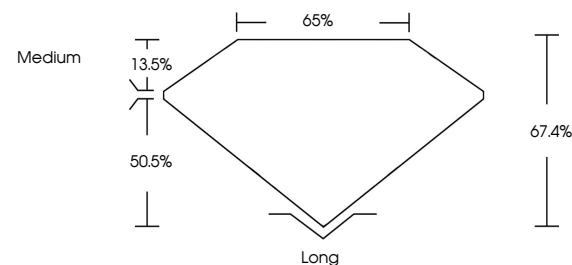
Color Grade **FANCY INTENSE PINK**

Clarity Grade **VS 1**

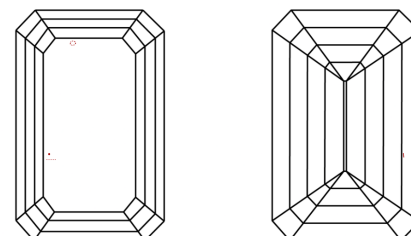


Sample Image Used

**PROPORTIONS**



**CLARITY CHARACTERISTICS**



**KEY TO SYMBOLS**

Red symbols indicate internal characteristics.  
Green symbols indicate external characteristics.

**COLOR**

D E F G H I J Faint Very Light Light

**CLARITY**

IF	VS <sup>1-2</sup>	VS <sup>1-2</sup>	SI <sup>1-2</sup>	I <sup>1-3</sup>
Internally Flawless	Very Very Slightly Included	Very Slightly Included	Slightly Included	Included

**ADDITIONAL GRADING INFORMATION**

Polish **EXCELLENT**

Symmetry **EXCELLENT**

Fluorescence **SLIGHT**

Inscription(s) **IGI LG648461473**

Comments: This Laboratory Grown Diamond was created by Chemical Vapor Deposition (CVD) growth process. Indications of post-growth treatment.



**IGI**

August 24, 2024  
IGI Report No. LG648461473  
**EMERALD CUT**  
1.01 CARAT  
FANCY INTENSE PINK  
VS 1  
6.86 X 4.82 X 3.25 MM  
Color Grade  
FANCY INTENSE PINK  
Depth 50.5%  
Table 13.5%  
Girdle Medium  
Culet Long  
Polish EXCELLENT  
Symmetry EXCELLENT  
Fluorescence SLIGHT  
Inscription(s) IGI LG648461473  
Comments: This Laboratory Grown Diamond was created by Chemical Vapor Deposition (CVD) growth process. Indications of post-growth treatment.