



**INTERNATIONAL
GEMOLOGICAL
INSTITUTE**

ELECTRONIC COPY

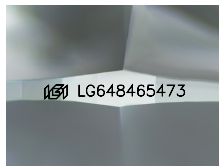
LG648465473



August 21, 2024
IGI Report Number LG648465473
ROUND BRILLIANT
LABORATORY GROWN DIAMOND
5.28 - 5.31 X 3.25 MM
Carat Weight 0.55 CARAT
Color Grade E
Clarity Grade SI 1
Cut Grade IDEAL
Polish EXCELLENT
Symmetry EXCELLENT
Fluorescence NONE
Inscription(s) IGI LG648465473

LABORATORY GROWN DIAMOND REPORT

August 21, 2024
IGI Report Number LG648465473
Description LABORATORY GROWN DIAMOND
Shape and Cutting Style ROUND BRILLIANT
Measurements 5.28 - 5.31 X 3.25 MM



Sample Image Used

Comments: This Laboratory Grown Diamond was created by Chemical Vapor Deposition (CVD) growth process. Type IIa

GRADING RESULTS

Carat Weight 0.55 CARAT
Color Grade E
Clarity Grade SI 1
Cut Grade IDEAL

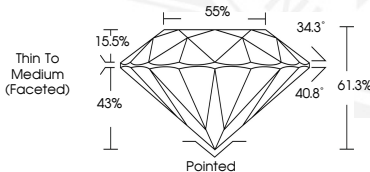
ADDITIONAL GRADING INFORMATION

Polish EXCELLENT
Symmetry EXCELLENT
Fluorescence NONE
Inscription(s) IGI LG648465473

Comments: This Laboratory Grown Diamond was created by Chemical Vapor Deposition (CVD) growth process. Type IIa



August 21, 2024
IGI Report Number LG648465473
ROUND BRILLIANT
LABORATORY GROWN DIAMOND
5.28 - 5.31 X 3.25 MM
Carat Weight 0.55 CARAT
Color Grade E
Clarity Grade SI 1
Cut Grade IDEAL
Polish EXCELLENT
Symmetry EXCELLENT
Fluorescence NONE
Inscription(s) IGI LG648465473



THIS DOCUMENT WAS PRODUCED WITH THE FOLLOWING SECURITY MEASURES: SPECIAL DOCUMENT PAPER, INK SCREENS, WATERMARK, BACKGROUND DESIGN, HOLOGRAM AND OTHER SECURITY FEATURES NOT LISTED AND DO EXCEED DOCUMENT SECURITY INDUSTRY GUIDELINES.

For terms & conditions and to verify this report, please visit www.igi.org