



ELECTRONIC COPY

LG648469323
Report verification at igi.org



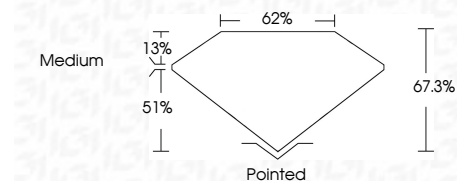
August 22, 2024
IGI Report Number LG648469323
Description LABORATORY GROWN DIAMOND

Shape and Cutting Style CUT CORNERED RECTANGULAR MODIFIED BRILLIANT

Measurements 8.20 X 5.81 X 3.91 MM

GRADING RESULTS

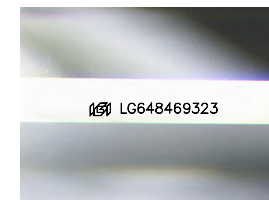
Carat Weight 1.59 CARAT
Color Grade E
Clarity Grade VVS 2



ADDITIONAL GRADING INFORMATION

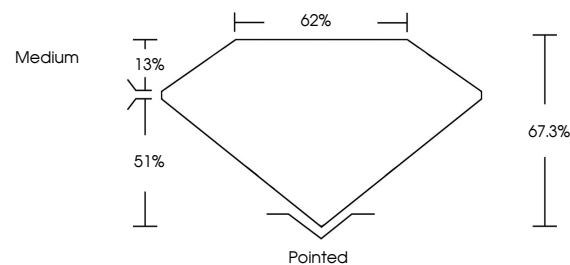
Polish EXCELLENT
Symmetry EXCELLENT
Fluorescence NONE
Inscription(s) IGI LG648469323

Comments: This Laboratory Grown Diamond was created by Chemical Vapor Deposition (CVD) growth process. Type IIa

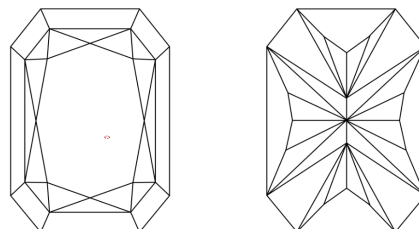


Sample Image Used

PROPORTIONS



CLARITY CHARACTERISTICS



KEY TO SYMBOLS

Red symbols indicate internal characteristics.
Green symbols indicate external characteristics.

COLOR

D E F G H I J Faint Very Light Light

CLARITY

IF VVS 1-2 VS 1-2 SI 1-2 I 1-3
Internally Flawless Very Very Slightly Included Very Slightly Included Slightly Included Included



August 22, 2024
IGI Report No LG648469323
CUT CORNERED RECT. MODIFIED BRILLIANT
1.59 CARAT E
VVS 2 67.6% 62%
Medium
Pointed
EXCELLENT EXCELLENT
NONE
IGI LG648469323
Comments: This Laboratory Grown Diamond was created by Chemical Vapor Deposition (CVD) growth process. Type IIa