



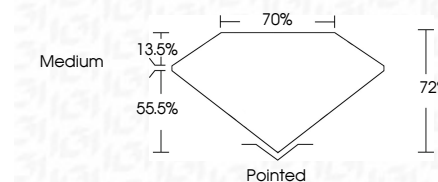
ELECTRONIC COPY

LG648469469 Report verification at igi.org



August 21, 2024 IGI Report Number LG648469469 Description LABORATORY GROWN DIAMOND Shape and Cutting Style PRINCESS CUT Measurements 5.71 X 5.67 X 4.08 MM

GRADING RESULTS Carat Weight 1.16 CARAT Color Grade E Clarity Grade VVS 2



ADDITIONAL GRADING INFORMATION Polish EXCELLENT Symmetry EXCELLENT Fluorescence NONE Inscription(s) LG648469469 Comments: As Grown - No indication of post-growth treatment. This Laboratory Grown Diamond was created by High Pressure High Temperature (HPHT) growth process. Type II



August 21, 2024 IGI Report No LG648469469 PRINCESS CUT 1.16 CARAT E VVS 2 72% 70% Medium Pointed EXCELLENT EXCELLENT NONE LG648469469

Comments: As Grown - No indication of post-growth treatment. This Laboratory Grown Diamond was created by High Pressure High Temperature (HPHT) growth process. Type II

LABORATORY GROWN DIAMOND REPORT

August 21, 2024 IGI Report Number LG648469469 Description LABORATORY GROWN DIAMOND Shape and Cutting Style PRINCESS CUT Measurements 5.71 X 5.67 X 4.08 MM

GRADING RESULTS

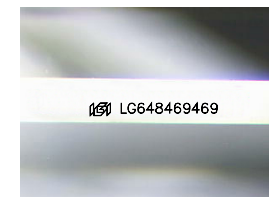
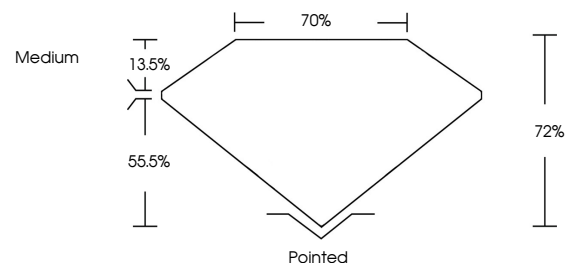
Carat Weight 1.16 CARAT Color Grade E Clarity Grade VVS 2

ADDITIONAL GRADING INFORMATION

Polish EXCELLENT Symmetry EXCELLENT Fluorescence NONE Inscription(s) LG648469469

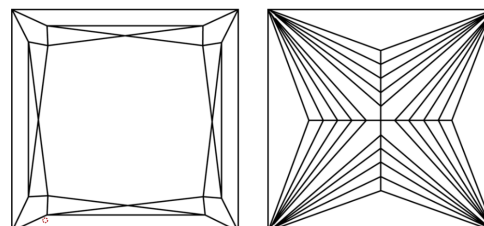
Comments: As Grown - No indication of post-growth treatment. This Laboratory Grown Diamond was created by High Pressure High Temperature (HPHT) growth process. Type II

PROPORTIONS



Sample Image Used

CLARITY CHARACTERISTICS



KEY TO SYMBOLS

Red symbols indicate internal characteristics. Green symbols indicate external characteristics.

COLOR

D E F G H I J Faint Very Light Light

CLARITY

IF VVS 1-2 VS 1-2 SI 1-2 I 1-3 Internally Flawless Very Very Slightly Included Very Slightly Included Slightly Included Included

