



**ELECTRONIC COPY**

LG648472062  
Report verification at igi.org



August 21, 2024

IGI Report Number **LG648472062**

Description **LABORATORY GROWN DIAMOND**

Shape and Cutting Style **ROUND BRILLIANT**

Measurements **8.16 - 8.20 X 5.04 MM**

**GRADING RESULTS**

Carat Weight **2.08 CARATS**

Color Grade **F**

Clarity Grade **VVS 2**

Cut Grade **IDEAL**

**LABORATORY GROWN DIAMOND REPORT**

August 21, 2024

IGI Report Number **LG648472062**

Description **LABORATORY GROWN DIAMOND**

Shape and Cutting Style **ROUND BRILLIANT**

Measurements **8.16 - 8.20 X 5.04 MM**

**GRADING RESULTS**

Carat Weight **2.08 CARATS**

Color Grade **F**

Clarity Grade **VVS 2**

Cut Grade **IDEAL**

**ADDITIONAL GRADING INFORMATION**

Polish **EXCELLENT**

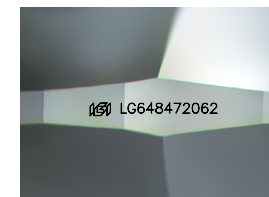
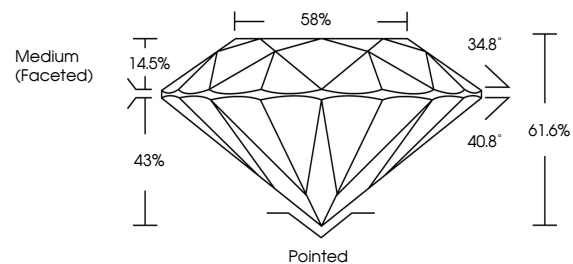
Symmetry **EXCELLENT**

Fluorescence **NONE**

Inscription(s) **IGI LG648472062**

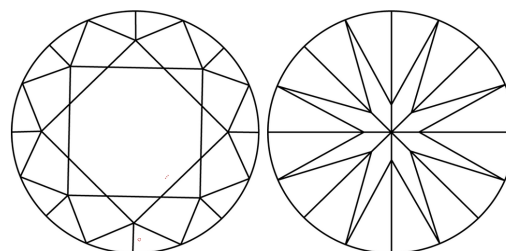
Comments: This Laboratory Grown Diamond was created by Chemical Vapor Deposition (CVD) growth process.  
Type IIa

**PROPORTIONS**



Sample Image Used

**CLARITY CHARACTERISTICS**



**KEY TO SYMBOLS**

Red symbols indicate internal characteristics.  
Green symbols indicate external characteristics.

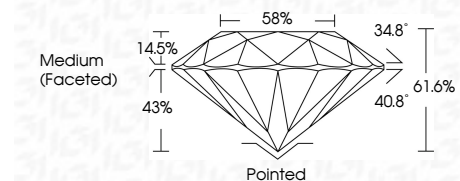
**COLOR**

D E F G H I J Faint Very Light Light

**CLARITY**

IF VS<sup>1-2</sup> VS<sup>1-2</sup> SI<sup>1-2</sup> I<sup>1-3</sup>

Internally Flawless Very Very Slightly Included Very Slightly Included Slightly Included Included



**ADDITIONAL GRADING INFORMATION**

Polish **EXCELLENT**

Symmetry **EXCELLENT**

Fluorescence **NONE**

Inscription(s) **IGI LG648472062**

Comments: This Laboratory Grown Diamond was created by Chemical Vapor Deposition (CVD) growth process.  
Type IIa



**IGI**



August 21, 2024	IGI Report No LG648472062	2.08 CARATS	F	VVS 2	IDEAL	61.6%	58%	Medium (Faceted)	Pointed	EXCELLENT	EXCELLENT	NONE	IGI LG648472062
IGI Report No LG648472062	ROUND BRILLIANT	8.16 - 8.20 X 5.04 MM	Color Grade	Clarity Grade	Cut Grade	Depth	Table	Grade	Culet	Polish	Symmetry	Fluorescence	Inscription(s)
<p>Comments: This Laboratory Grown Diamond was created by Chemical Vapor Deposition (CVD) growth process. Type IIa</p>													