



ELECTRONIC COPY

LG648475953 Report verification at igi.org



September 24, 2024
IGI Report Number LG648475953
Description LABORATORY GROWN DIAMOND
Shape and Cutting Style CUT CORNERED RECTANGULAR MODIFIED BRILLIANT
Measurements 12.18 X 8.27 X 5.37 MM
GRADING RESULTS
Carat Weight 5.02 CARATS
Color Grade FANCY VIVID PINK
Clarity Grade VS 2

September 24, 2024
IGI Report Number LG648475953
Description LABORATORY GROWN DIAMOND
Shape and Cutting Style CUT CORNERED RECTANGULAR MODIFIED BRILLIANT
Measurements 12.18 X 8.27 X 5.37 MM

GRADING RESULTS

Carat Weight 5.02 CARATS
Color Grade FANCY VIVID PINK
Clarity Grade VS 2

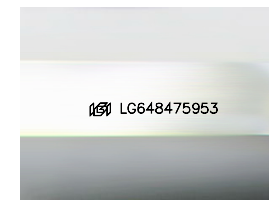
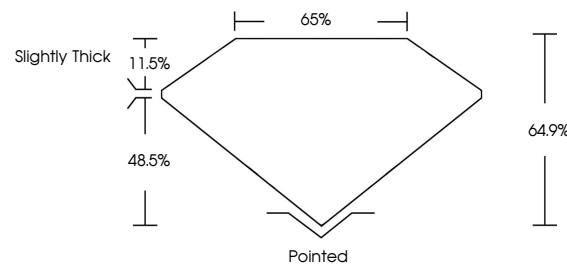
ADDITIONAL GRADING INFORMATION

Polish EXCELLENT
Symmetry EXCELLENT
Fluorescence SLIGHT
Inscription(s) LG648475953

Comments: This Laboratory Grown Diamond was created by Chemical Vapor Deposition (CVD) growth process.
Indications of post-growth treatment.

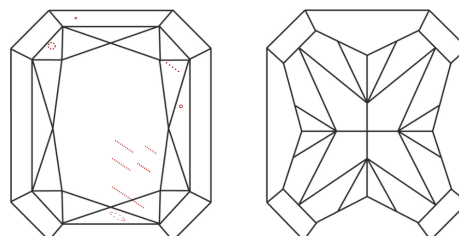
Secondary color: Red

PROPORTIONS



Sample Image Used

CLARITY CHARACTERISTICS



KEY TO SYMBOLS

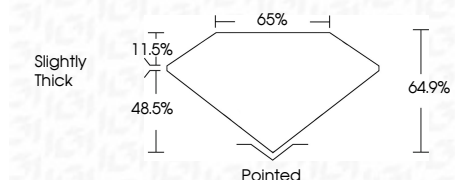
Red symbols indicate internal characteristics.
Green symbols indicate external characteristics.

COLOR

D E F G H I J Faint Very Light Light

CLARITY

IF VS 1-2 VS 1-2 SI 1-2 I 1-3
Internally Flawless Very Very Slightly Included Very Slightly Included Slightly Included Included



ADDITIONAL GRADING INFORMATION

Polish EXCELLENT
Symmetry EXCELLENT
Fluorescence SLIGHT
Inscription(s) LG648475953
Comments: This Laboratory Grown Diamond was created by Chemical Vapor Deposition (CVD) growth process.
Indications of post-growth treatment.
Secondary color: Red



September 24, 2024
IGI Report No LG648475953
CUT CORNERED RECT. MODIFIED BRILLIANT
12.18 X 8.27 X 5.37 MM
5.02 CARATS
FANCY VIVID PINK
VS 2
64.9%
65%
Slightly Thick
Pointed
EXCELLENT
EXCELLENT
SLIGHT
LG648475953

Comments: This Laboratory Grown Diamond was created by Chemical Vapor Deposition (CVD) growth process.
Indications of post-growth treatment.
Secondary color: Red