



ELECTRONIC COPY

LG648477701 Report verification at igi.org



August 27, 2024
IGI Report Number LG648477701
Description LABORATORY GROWN DIAMOND
Shape and Cutting Style SQUARE CUSHION BRILLIANT
Measurements 7.09 X 7.07 X 4.44 MM
GRADING RESULTS
Carat Weight 1.87 CARAT
Color Grade E
Clarity Grade INTERNALLY FLAWLESS

August 27, 2024
IGI Report Number LG648477701
Description LABORATORY GROWN DIAMOND
Shape and Cutting Style SQUARE CUSHION BRILLIANT
Measurements 7.09 X 7.07 X 4.44 MM

GRADING RESULTS

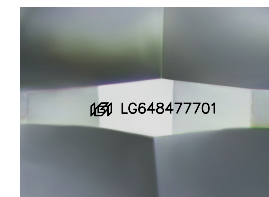
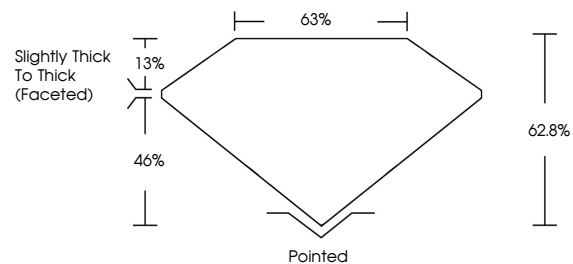
Carat Weight 1.87 CARAT
Color Grade E
Clarity Grade INTERNALLY FLAWLESS

ADDITIONAL GRADING INFORMATION

Polish EXCELLENT
Symmetry EXCELLENT
Fluorescence NONE
Inscription(s) IGI LG648477701

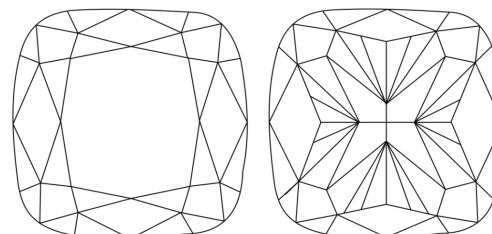
Comments: As Grown - No indication of post-growth treatment.
This Laboratory Grown Diamond was created by High Pressure High Temperature (HPHT) growth process.
Type II

PROPORTIONS



Sample Image Used

CLARITY CHARACTERISTICS



KEY TO SYMBOLS

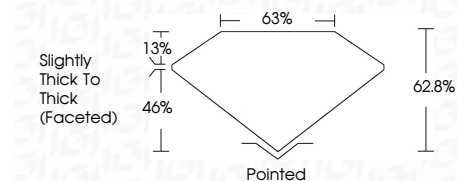
Red symbols indicate internal characteristics.
Green symbols indicate external characteristics.

COLOR

D E F G H I J Faint Very Light Light

CLARITY

IF VS 1-2 VS 1-2 SI 1-2 I 1-3
Internally Flawless Very Very Slightly Included Very Slightly Included Slightly Included Included



ADDITIONAL GRADING INFORMATION

Polish EXCELLENT
Symmetry EXCELLENT
Fluorescence NONE
Inscription(s) IGI LG648477701
Comments: As Grown - No indication of post-growth treatment.
This Laboratory Grown Diamond was created by High Pressure High Temperature (HPHT) growth process.
Type II



August 27, 2024
IGI Report No LG648477701
SQUARE CUSHION BRILLIANT
7.09 X 7.07 X 4.44 MM
1.87 CARAT E
Color Grade E
Clarity Grade VS 1-2
Depth 62.8%
Table 65%
Girdle Slightly Thick To Thick (Faceted)
Culet Pointed
Polish EXCELLENT
Symmetry EXCELLENT
Fluorescence NONE
Inscription(s) IGI LG648477701
Comments: As Grown - No indication of post-growth treatment.
This Laboratory Grown Diamond was created by High Pressure High Temperature (HPHT) growth process.
Type II