



**INTERNATIONAL  
GEMOLOGICAL  
INSTITUTE**

**ELECTRONIC COPY**

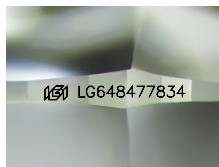
**LG648477834**



August 27, 2024  
**IGI Report Number** LG648477834  
**ROUND BRILLIANT**  
**LABORATORY GROWN DIAMOND**  
**5.44 - 5.45 X 3.45 MM**  
**Carat Weight** 0.62 CARAT  
**Color Grade** F  
**Clarity Grade** VS 1  
**Cut Grade** VERY GOOD  
**Polish** EXCELLENT  
**Symmetry** EXCELLENT  
**Fluorescence** NONE  
**Inscription(s)** IGI LG648477834

**LABORATORY GROWN DIAMOND REPORT**

August 27, 2024  
**IGI Report Number** LG648477834  
**Description** LABORATORY GROWN DIAMOND  
**Shape and Cutting Style** ROUND BRILLIANT  
**Measurements** 5.44 - 5.45 X 3.45 MM



Sample Image Used

**Comments:** This Laboratory Grown Diamond was created by Chemical Vapor Deposition (CVD) growth process. Type IIa

**GRADING RESULTS**

**Carat Weight** 0.62 CARAT  
**Color Grade** F  
**Clarity Grade** VS 1  
**Cut Grade** VERY GOOD

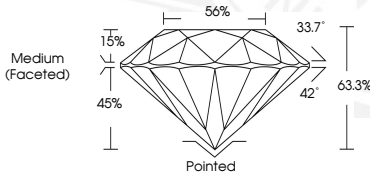
**ADDITIONAL GRADING INFORMATION**

**Polish** EXCELLENT  
**Symmetry** EXCELLENT  
**Fluorescence** NONE  
**Inscription(s)** IGI LG648477834

**Comments:** This Laboratory Grown Diamond was created by Chemical Vapor Deposition (CVD) growth process. Type IIa



August 27, 2024  
**IGI Report Number** LG648477834  
**ROUND BRILLIANT**  
**LABORATORY GROWN DIAMOND**  
**5.44 - 5.45 X 3.45 MM**  
**Carat Weight** 0.62 CARAT  
**Color Grade** F  
**Clarity Grade** VS 1  
**Cut Grade** VERY GOOD  
**Polish** EXCELLENT  
**Symmetry** EXCELLENT  
**Fluorescence** NONE  
**Inscription(s)** IGI LG648477834



THIS DOCUMENT WAS PRODUCED WITH THE FOLLOWING SECURITY MEASURES: SPECIAL DOCUMENT PAPER, INK SCREENS, WATERMARK, BACKGROUND DESIGN, HOLOGRAM AND OTHER SECURITY FEATURES NOT LISTED AND DO EXCEED DOCUMENT SECURITY INDUSTRY GUIDELINES.

For terms & conditions and to verify this report, please visit [www.igi.org](http://www.igi.org)