



ELECTRONIC COPY

LG648478025
Report verification at igi.org



August 27, 2024

IGI Report Number **LG648478025**

Description **LABORATORY GROWN DIAMOND**

Shape and Cutting Style **EMERALD CUT**

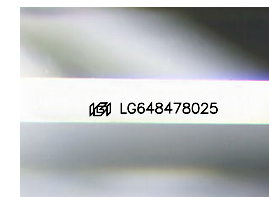
Measurements **7.12 X 4.62 X 3.12 MM**

GRADING RESULTS

Carat Weight **1.00 CARAT**

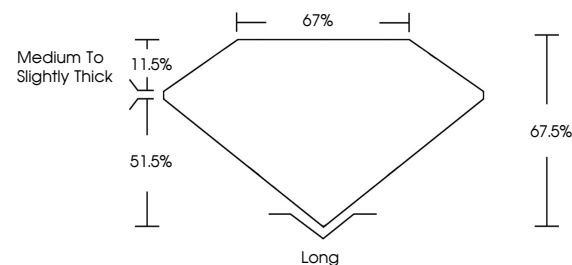
Color Grade **G**

Clarity Grade **VS 2**

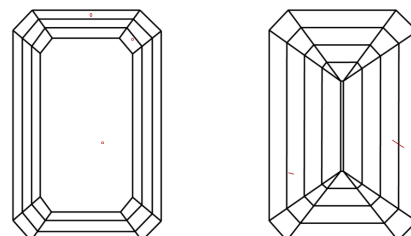


Sample Image Used

PROPORTIONS



CLARITY CHARACTERISTICS



KEY TO SYMBOLS

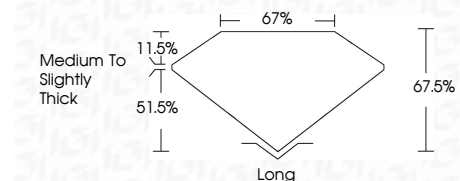
Red symbols indicate internal characteristics.
Green symbols indicate external characteristics.

COLOR

D E F G H I J Faint Very Light Light

CLARITY

| IF | VS ¹⁻² | SI ¹⁻² | I ¹⁻³ |
|---------------------|-----------------------------|------------------------|-------------------|
| Internally Flawless | Very Very Slightly Included | Very Slightly Included | Slightly Included |



ADDITIONAL GRADING INFORMATION

Polish **EXCELLENT**

Symmetry **EXCELLENT**

Fluorescence **NONE**

Inscription(s) **IGI LG648478025**

Comments: This Laboratory Grown Diamond was created by Chemical Vapor Deposition (CVD) growth process. Type IIa



IGI



August 27, 2024
IGI Report No LG648478025
EMERALD CUT
7.12 X 4.62 X 3.12 MM
Carat Weight 1.00 CARAT
Color Grade G
Clarity Grade VS 2
Table 67.5%
Depth 51.5%
Girdle Medium to Slightly Thick
Culet Long
Polish EXCELLENT
Symmetry EXCELLENT
Fluorescence NONE
Inscription(s) IGI LG648478025

Comments: This Laboratory Grown Diamond was created by Chemical Vapor Deposition (CVD) growth process. Type IIa