



**ELECTRONIC COPY**

LG648478165  
Report verification at igi.org



September 6, 2024

IGI Report Number **LG648478165**

Description **LABORATORY GROWN DIAMOND**

Shape and Cutting Style **EMERALD CUT**

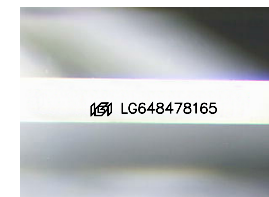
Measurements **9.73 X 6.95 X 4.62 MM**

**GRADING RESULTS**

Carat Weight **3.02 CARATS**

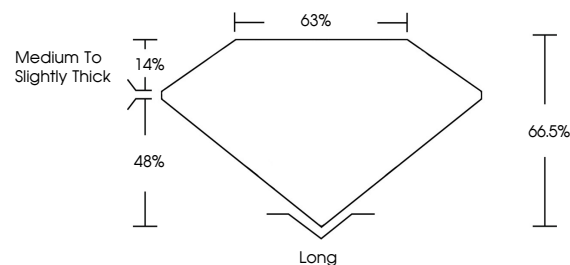
Color Grade **FANCY INTENSE PINK**

Clarity Grade **VVS 2**

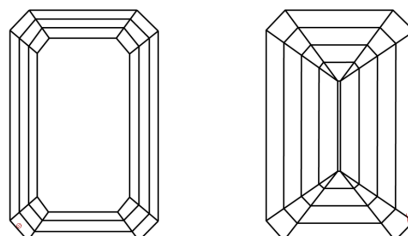


Sample Image Used

**PROPORTIONS**



**CLARITY CHARACTERISTICS**



**KEY TO SYMBOLS**

Red symbols indicate internal characteristics.  
Green symbols indicate external characteristics.

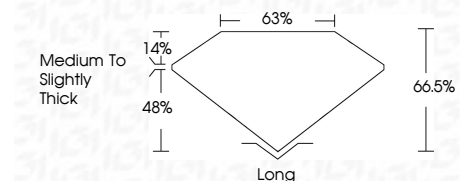
**COLOR**

D E F G H I J Faint Very Light Light

**CLARITY**

IF VVS<sup>1-2</sup> VS<sup>1-2</sup> SI<sup>1-2</sup> I<sup>1-3</sup>

Internally Flawless Very Very Slightly Included Very Slightly Included Slightly Included Included



**ADDITIONAL GRADING INFORMATION**

Polish **EXCELLENT**

Symmetry **EXCELLENT**

Fluorescence **SLIGHT**

Inscription(s) **IGI LG648478165**

Comments: This Laboratory Grown Diamond was created by Chemical Vapor Deposition (CVD) growth process. Indications of post-growth treatment.



**IGI**



September 6, 2024  
IGI Report No. LG648478165  
**EMERALD CUT**

**3.02 CARATS**  
Carat Weight  
**FANCY INTENSE PINK**  
Color Grade  
**VVS 2**  
Clarity Grade  
**66.5%**  
Depth  
**63%**  
Table  
**Medium to Slightly Thick**  
Girdle  
**Long**  
Culet  
**EXCELLENT**  
Polish  
**EXCELLENT**  
Symmetry  
**SLIGHT**  
Fluorescence  
**IGI LG648478165**  
Inscription(s)

Comments: This Laboratory Grown Diamond was created by Chemical Vapor Deposition (CVD) growth process. Indications of post-growth treatment.