



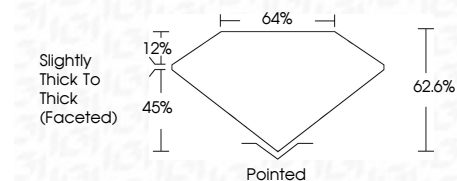
ELECTRONIC COPY

LG648484781
Report verification at igi.org



August 20, 2024
IGI Report Number LG648484781
Description LABORATORY GROWN DIAMOND
Shape and Cutting Style MARQUISE BRILLIANT
Measurements 12.09 X 5.94 X 3.72 MM

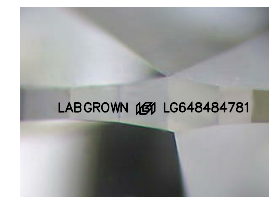
GRADING RESULTS
Carat Weight 1.53 CARAT
Color Grade E
Clarity Grade SI 1



ADDITIONAL GRADING INFORMATION
Polish EXCELLENT
Symmetry EXCELLENT
Fluorescence NONE
Inscription(s) LABGROWN (IGI) LG648484781
Comments: This Laboratory Grown Diamond was created by Chemical Vapor Deposition (CVD) growth process. Type IIa

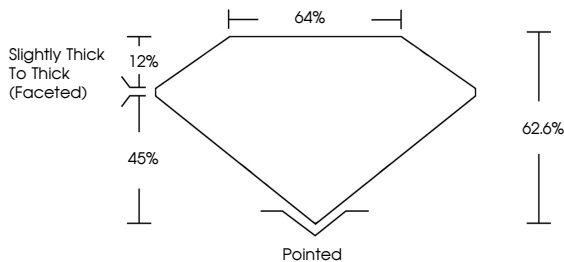


August 20, 2024
IGI Report No LG648484781
MARQUISE BRILLIANT
12.09 X 5.94 X 3.72 MM
1.53 CARAT
Color Grade E
Clarity Grade SI 1
Depth 62.6%
Table 44%
Girdle Slightly Thick To Thick (Faceted)
Culet Pointed
Polish EXCELLENT
Symmetry EXCELLENT
Fluorescence NONE
Inscription(s) LABGROWN (IGI) LG648484781
Comments: This Laboratory Grown Diamond was created by Chemical Vapor Deposition (CVD) growth process. Type IIa

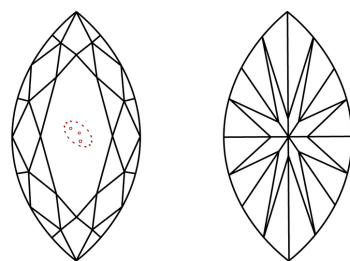


Sample Image Used

PROPORTIONS



CLARITY CHARACTERISTICS



KEY TO SYMBOLS

Red symbols indicate internal characteristics.
Green symbols indicate external characteristics.

COLOR

Table with columns D, E, F, G, H, I, J, Faint, Very Light, Light

CLARITY

Table with columns IF, VS 1-2, VS 1-2, SI 1-2, I 1-3, Internally Flawless, Very Very Slightly Included, Very Slightly Included, Slightly Included, Included

