



ELECTRONIC COPY

LG648486337
Report verification at igi.org



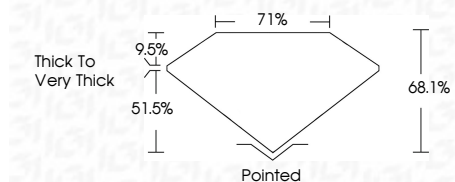
August 22, 2024
IGI Report Number **LG648486337**
Description **LABORATORY GROWN DIAMOND**

Shape and Cutting Style **CUT CORNERED
RECTANGULAR MODIFIED
BRILLIANT**

Measurements **8.01 X 5.54 X 3.77 MM**

GRADING RESULTS

Carat Weight **1.58 CARAT**
Color Grade **FANCY INTENSE YELLOW**
Clarity Grade **VVS 2**



ADDITIONAL GRADING INFORMATION

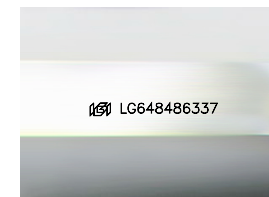
Polish **EXCELLENT**
Symmetry **EXCELLENT**
Fluorescence **NONE**

Inscription(s) **IGI LG648486337**

Comments: This Laboratory Grown Diamond was created by Chemical Vapor Deposition (CVD) growth process.

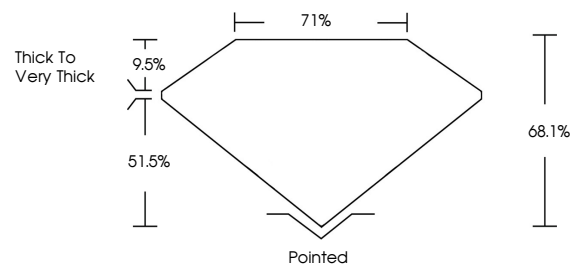


IGI

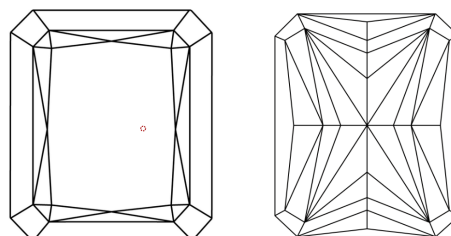


Sample Image Used

PROPORTIONS



CLARITY CHARACTERISTICS



KEY TO SYMBOLS

Red symbols indicate internal characteristics.
Green symbols indicate external characteristics.

COLOR

D E F G H I J Faint Very Light Light

CLARITY

IF VS¹⁻² VS¹⁻² SI¹⁻² I¹⁻³

Internally Flawless Very Very Slightly Included Very Slightly Included Slightly Included Included



August 22, 2024
IGI Report No **LG648486337**
CUT CORNERED RECT. MODIFIED BRILLIANT
8.01 X 5.54 X 3.77 MM
Carat Weight **1.58 CARAT**
Color Grade **FANCY INTENSE YELLOW**
Clarity Grade **VVS 2**
Depth **51.5%**
Table **68.1%**
Girdle **71%**
Thickness **Thick to Very Thick**
Culet **Pointed**
Polish **EXCELLENT**
Symmetry **EXCELLENT**
Fluorescence **NONE**
Inscription(s) **IGI LG648486337**
Comments: This Laboratory Grown Diamond was created by Chemical Vapor Deposition (CVD) growth process.