



ELECTRONIC COPY

LG648489645
Report verification at igi.org



August 16, 2024

IGI Report Number **LG648489645**

Description **LABORATORY GROWN DIAMOND**

Shape and Cutting Style **PRINCESS CUT**

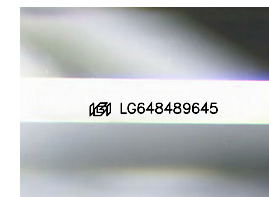
Measurements **6.04 X 6.01 X 4.09 MM**

GRADING RESULTS

Carat Weight **1.28 CARAT**

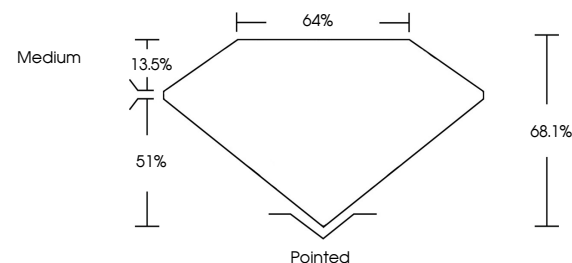
Color Grade **D**

Clarity Grade **VVS 1**

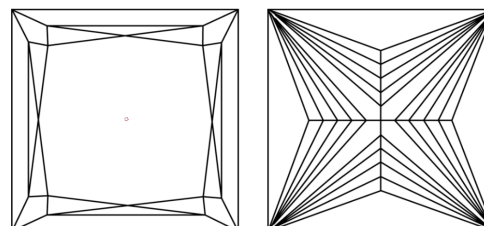


Sample Image Used

PROPORTIONS



CLARITY CHARACTERISTICS



KEY TO SYMBOLS

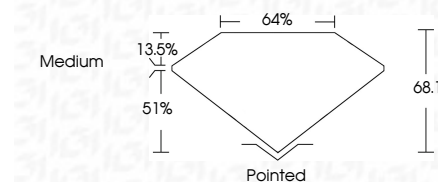
Red symbols indicate internal characteristics.
Green symbols indicate external characteristics.

COLOR

D E F G H I J Faint Very Light Light

CLARITY

IF	VS ¹⁻²	VS ¹⁻²	SI ¹⁻²	I ¹⁻³
Internally Flawless	Very Very Slightly Included	Very Slightly Included	Slightly Included	Included



ADDITIONAL GRADING INFORMATION

Polish **EXCELLENT**

Symmetry **EXCELLENT**

Fluorescence **NONE**

Inscription(s) **IGI LG648489645**

Comments: As Grown - No indication of post-growth treatment.

This Laboratory Grown Diamond was created by High Pressure High Temperature (HPHT) growth process. Type II



IGI

August 16, 2024
IGI Report No. LG648489645
PRINCESS CUT
1.28 CARAT
D
6.04 X 6.01 X 4.09 MM
Color Grade
Depth 68.1%
Table 13.5%
Girdle
Medium
Pointed
EXCELLENT
EXCELLENT
NONE
IGI LG648489645
Comments: As Grown - No indication of post-growth treatment.
This Laboratory Grown Diamond was created by High Pressure High Temperature (HPHT) growth process. Type II