



ELECTRONIC COPY

LG648491345
Report verification at igi.org



August 25, 2024

IGI Report Number **LG648491345**

Description **LABORATORY GROWN DIAMOND**

Shape and Cutting Style **EMERALD CUT**

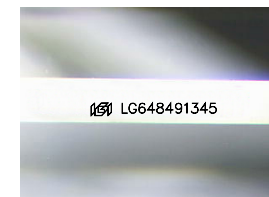
Measurements **10.30 X 6.98 X 4.64 MM**

GRADING RESULTS

Carat Weight **3.22 CARATS**

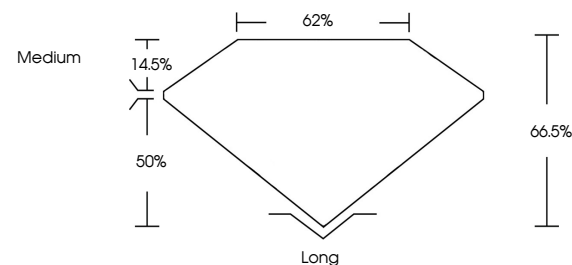
Color Grade **FANCY INTENSE PINK**

Clarity Grade **VS 1**

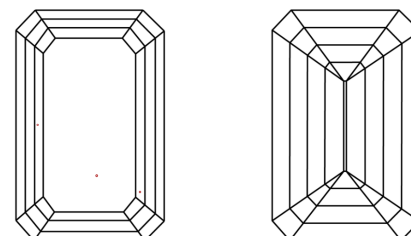


Sample Image Used

PROPORTIONS



CLARITY CHARACTERISTICS



KEY TO SYMBOLS

Red symbols indicate internal characteristics.
Green symbols indicate external characteristics.

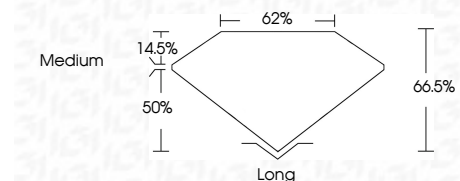
COLOR

D E F G H I J Faint Very Light Light

CLARITY

IF WS¹⁻² VS¹⁻² SI¹⁻² I¹⁻³

Internally Flawless Very Very Slightly Included Very Slightly Included Slightly Included Included



ADDITIONAL GRADING INFORMATION

Polish **EXCELLENT**

Symmetry **EXCELLENT**

Fluorescence **SLIGHT**

Inscription(s) **IGI LG648491345**

Comments: This Laboratory Grown Diamond was created by Chemical Vapor Deposition (CVD) growth process. Indications of post-growth treatment.



IGI



August 25, 2024	3.22 CARATS
IGI Report No LG648491345	FANCY INTENSE PINK
EMERALD CUT	VS 1
10.30 X 6.98 X 4.64 MM	66.5%
Carat Weight	62%
Color Grade	Medium
Clarity Grade	Long
Depth	EXCELLENT
Table	EXCELLENT
Graile	SLIGHT
Culet	IGI LG648491345
Polish	
Symmetry	
Fluorescence	
Inscription(s)	

Comments: This Laboratory Grown Diamond was created by Chemical Vapor Deposition (CVD) growth process. Indications of post-growth treatment.