



ELECTRONIC COPY

LABORATORY GROWN DIAMOND REPORT

August 15, 2024	
IGI Report Number	LG648495573
Description	LABORATORY GROWN DIAMOND
Shape and Cutting Style	CUT CORNERED RECTANGULAR MODIFIED BRILLIANT
Measurements	8.74 X 6.00 X 4.10 MM

GRADING RESULTS

Carat Weight	1.86 CARAT
Color Grade	E
Clarity Grade	SI 1

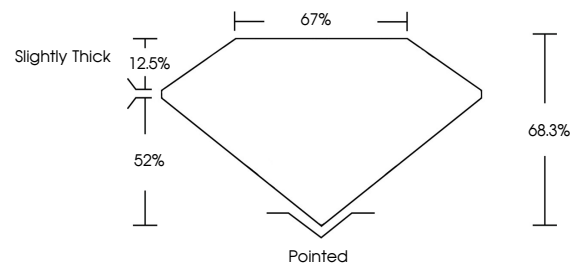
ADDITIONAL GRADING INFORMATION

Polish	EXCELLENT
Symmetry	EXCELLENT
Fluorescence	NONE
Inscription(s)	 LG648495573

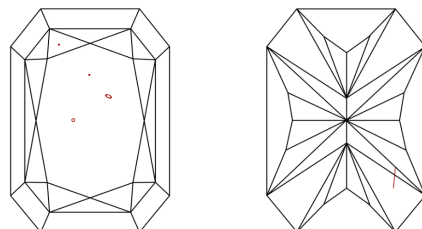
Comments: This Laboratory Grown Diamond was created by Chemical Vapor Deposition (CVD) growth process.
Type IIa

LG648495573
Report verification at [igi.org](https://www.igi.org)

PROPORTIONS

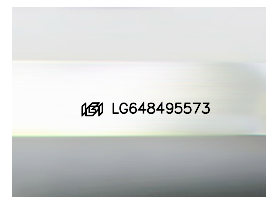


CLARITY CHARACTERISTICS



KEY TO SYMBOLS

Red symbols indicate internal characteristics.
Green symbols indicate external characteristics.



Sample Image Used

COLOR

D E F G H I J Faint Very Light Light

CLARITY

IF	VVS ¹⁻²	VS ¹⁻²	SI ¹⁻²	I ¹⁻³
Internally Flawless	Very Very Slightly Included	Very Slightly Included	Slightly Included	Included



© IGI 2020, International Gemological Institute

FD - 10 20

www.igi.org

LABORATORY GROWN DIAMOND REPORT

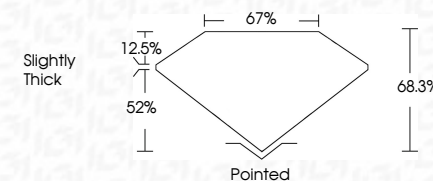


August 15, 2024	
IGI Report Number	LG648495573
Description	LABORATORY GROWN DIAMOND
Shape and Cutting Style	CUT CORNERED RECTANGULAR MODIFIED BRILLIANT

Measurements **8.74 X 6.00 X 4.10 MM**

GRADING RESULTS

Carat Weight	1.86 CARAT
Color Grade	E
Clarity Grade	SI 1



ADDITIONAL GRADING INFORMATION

Polish	EXCELLENT
Symmetry	EXCELLENT
Fluorescence	NONE
Inscription(s)	18 LG48495573

Comments: This Laboratory Grown Diamond was created by Chemical Vapor Deposition (CVD) growth process.
Type IIa



August 15, 2024	August 15, 2024
GI REPORTED RECT. MODIFIED BRILLIANT	GI REPORTED RECT. MODIFIED BRILLIANT
1.86 CARAT	1.86 CARAT
E	E
S I 1	S I 1
68.3%	68.3%
57%	57%
Slightly Thick	Slightly Thick
Pointed	Pointed
EXCELLENT	EXCELLENT
EXCELLENT	EXCELLENT
NONE	NONE
1601 LG546495573	1601 LG546495573
Comments:	Comments:
The Laboratory Grown Diamond was	The Laboratory Grown Diamond was
found to be a CVD growth process.	found to be a CVD growth process.
Type IIa	Type IIa