



ELECTRONIC COPY

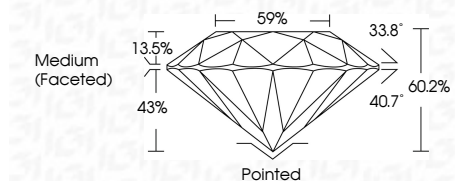
LG648495875
Report verification at igi.org



August 18, 2024
IGI Report Number LG648495875
Description LABORATORY GROWN DIAMOND
Shape and Cutting Style ROUND BRILLIANT
Measurements 9.39 - 9.41 X 5.66 MM

GRADING RESULTS

Carat Weight 3.09 CARATS
Color Grade G
Clarity Grade VVS 2
Cut Grade IDEAL



ADDITIONAL GRADING INFORMATION

Polish EXCELLENT
Symmetry EXCELLENT
Fluorescence NONE
Inscription(s) IGI LG648495875
Comments: This Laboratory Grown Diamond was created by Chemical Vapor Deposition (CVD) growth process. Type IIa



Table with 2 columns: Property and Value. Includes Carat Weight (3.09 CARATS), Color Grade (G), Clarity Grade (VVS 2), Cut Grade (IDEAL), Depth (60.2%), Table (59%), Girdle (Medium (Faceted)), and other grading details.

August 18, 2024
IGI Report Number LG648495875
Description LABORATORY GROWN DIAMOND
Shape and Cutting Style ROUND BRILLIANT
Measurements 9.39 - 9.41 X 5.66 MM

GRADING RESULTS

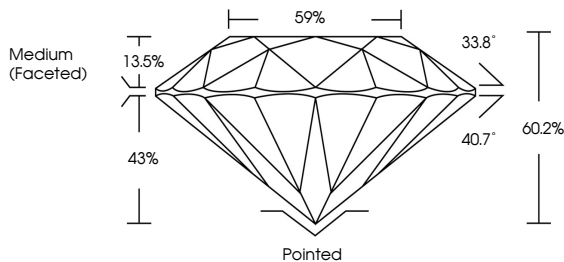
Carat Weight 3.09 CARATS
Color Grade G
Clarity Grade VVS 2
Cut Grade IDEAL

ADDITIONAL GRADING INFORMATION

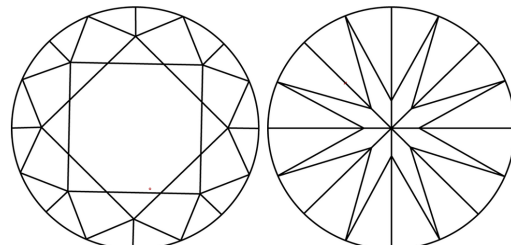
Polish EXCELLENT
Symmetry EXCELLENT
Fluorescence NONE
Inscription(s) IGI LG648495875

Comments: This Laboratory Grown Diamond was created by Chemical Vapor Deposition (CVD) growth process. Type IIa

PROPORTIONS

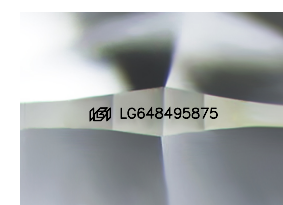


CLARITY CHARACTERISTICS



KEY TO SYMBOLS

Red symbols indicate internal characteristics.
Green symbols indicate external characteristics.



Sample Image Used

COLOR

Color scale table with categories: D, E, F, G, H, I, J, Faint, Very Light, Light.

CLARITY

Clarity scale table with categories: IF, VS 1-2, VS 1-2, SI 1-2, I 1-3, Internally Flawless, Very Very Slightly Included, Very Slightly Included, Slightly Included, Included.



August 18, 2024
IGI Report No LG648495875
ROUND BRILLIANT

Summary table of diamond properties: 3.09 CARATS, G, VVS 2, IDEAL, 60.2%, 59%, Medium (Faceted), Pointed, EXCELLENT, EXCELLENT, NONE, IGI LG648495875.

Comments: This Laboratory Grown Diamond was created by Chemical Vapor Deposition (CVD) growth process. Type IIa