



ELECTRONIC COPY

LG649400531
Report verification at igi.org



October 10, 2024

IGI Report Number **LG649400531**

Description **LABORATORY GROWN DIAMOND**

Shape and Cutting Style **ROUND BRILLIANT**

Measurements **6.42 - 6.45 X 3.97 MM**

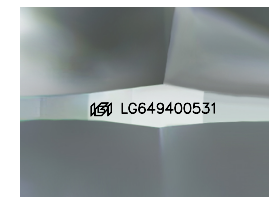
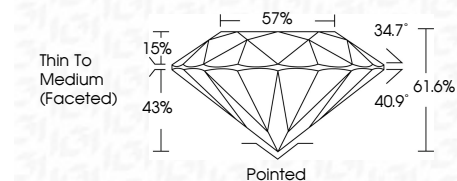
GRADING RESULTS

Carat Weight **1.01 CARAT**

Color Grade **D**

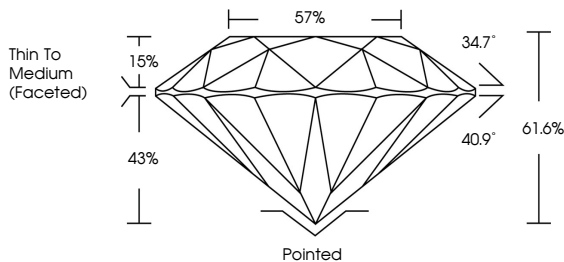
Clarity Grade **VVS 2**

Cut Grade **IDEAL**

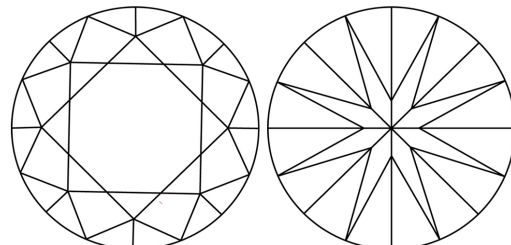


Sample Image Used

PROPORTIONS



CLARITY CHARACTERISTICS



KEY TO SYMBOLS

Red symbols indicate internal characteristics.
Green symbols indicate external characteristics.

COLOR

D	E	F	G	H	I	J	Faint	Very Light	Light
---	---	---	---	---	---	---	-------	------------	-------

CLARITY

IF	VVS ¹⁻²	VS ¹⁻²	SI ¹⁻²	I ¹⁻³
Internally Flawless	Very Very Slightly Included	Very Slightly Included	Slightly Included	Included

ADDITIONAL GRADING INFORMATION

Polish **EXCELLENT**

Symmetry **EXCELLENT**

Fluorescence **NONE**

Inscription(s) **IGI LG649400531**

Comments: As Grown - No indication of post-growth treatment.
This Laboratory Grown Diamond was created by High Pressure High Temperature (HPHT) growth process.
Type II



October 10, 2024	IGI Report No LG649400531	ROUND BRILLIANT
6.42 - 6.45 X 3.97 MM	1.01 CARAT	D
Color Grade	VVS 2	IDEAL
Clarity Grade	61.6%	57%
Depth	Thin To Medium (Faceted)	Pointed
Table	EXCELLENT	EXCELLENT
Girdle	NONE	NONE
Culet	IGI LG649400531	
Polish		
Symmetry		
Fluorescence		
Inscription(s)		

Comments: As Grown - No indication of post-growth treatment.
This Laboratory Grown Diamond was created by High Pressure High Temperature (HPHT) growth process.
Type II