



ELECTRONIC COPY

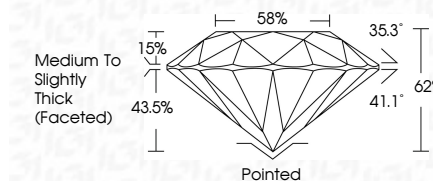
LG649401716
Report verification at igi.org



September 5, 2024
IGI Report Number LG649401716
Description LABORATORY GROWN DIAMOND
Shape and Cutting Style ROUND BRILLIANT
Measurements 6.48 - 6.52 X 4.03 MM

GRADING RESULTS

Carat Weight 1.04 CARAT
Color Grade D
Clarity Grade VVS 1
Cut Grade IDEAL



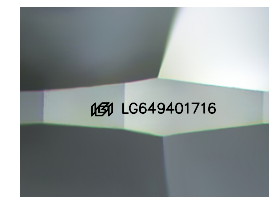
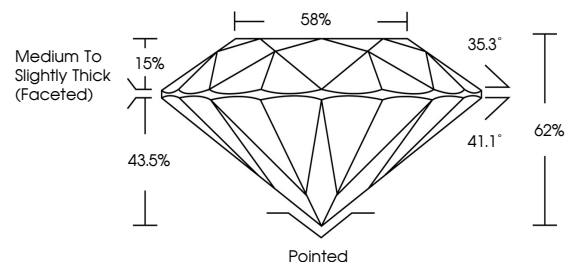
ADDITIONAL GRADING INFORMATION

Polish EXCELLENT
Symmetry EXCELLENT
Fluorescence NONE
Inscription(s) IGI LG649401716
Comments: This Laboratory Grown Diamond was created by Chemical Vapor Deposition (CVD) growth process. Type IIa



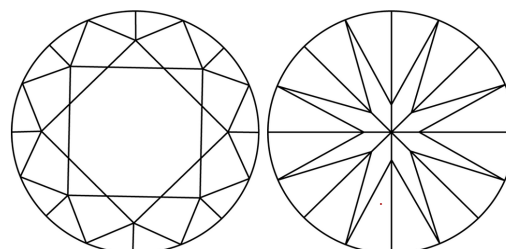
September 5, 2024
IGI Report No LG649401716
ROUND BRILLIANT
6.48 - 6.52 X 4.03 MM
1.04 CARAT
D
VVS 1
IDEAL
43%
58%
Medium To Slightly Thick (Faceted)
Pointed
EXCELLENT
EXCELLENT
NONE
IGI LG649401716
Comments: This Laboratory Grown Diamond was created by Chemical Vapor Deposition (CVD) growth process. Type IIa

PROPORTIONS



Sample Image Used

CLARITY CHARACTERISTICS



KEY TO SYMBOLS

Red symbols indicate internal characteristics.
Green symbols indicate external characteristics.

COLOR

D E F G H I J Faint Very Light Light

CLARITY

IF VVS 1-2 VS 1-2 SI 1-2 I 1-3
Internally Flawless Very Very Slightly Included Very Slightly Included Slightly Included Included

