



ELECTRONIC COPY

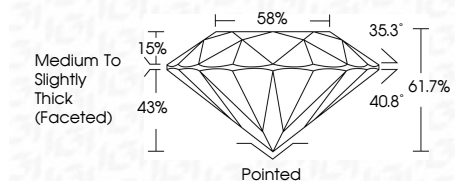
LG649401733
Report verification at igi.org



September 5, 2024
IGI Report Number LG649401733
Description LABORATORY GROWN DIAMOND
Shape and Cutting Style ROUND BRILLIANT
Measurements 7.37 - 7.41 X 4.56 MM

GRADING RESULTS

Carat Weight 1.54 CARAT
Color Grade E
Clarity Grade VVS 2
Cut Grade IDEAL

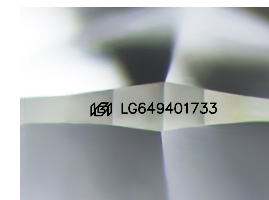


ADDITIONAL GRADING INFORMATION

Polish EXCELLENT
Symmetry EXCELLENT
Fluorescence NONE
Inscription(s) LG649401733
Comments: This Laboratory Grown Diamond was created by Chemical Vapor Deposition (CVD) growth process. Type IIa

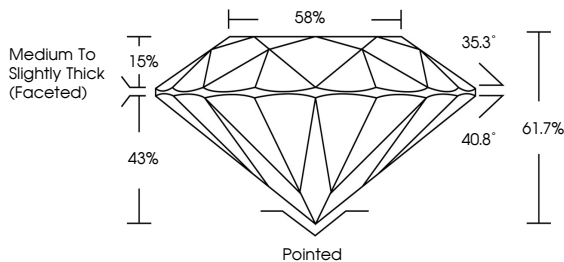


September 5, 2024
IGI Report No LG649401733
ROUND BRILLIANT
7.37 - 7.41 X 4.56 MM
1.54 CARAT E
VVS 2 IDEAL
61.7% 58%
Medium To Slightly Thick (Faceted)
Pointed EXCELLENT EXCELLENT NONE
None LG649401733
Comments: This Laboratory Grown Diamond was created by Chemical Vapor Deposition (CVD) growth process. Type IIa

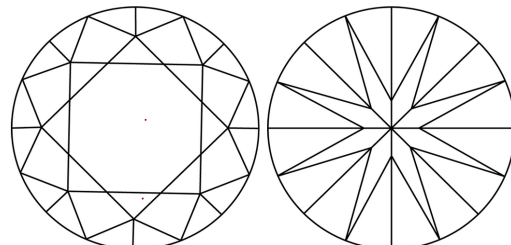


Sample Image Used

PROPORTIONS



CLARITY CHARACTERISTICS



KEY TO SYMBOLS

Red symbols indicate internal characteristics.
Green symbols indicate external characteristics.

COLOR

D E F G H I J Faint Very Light Light

CLARITY

IF VVS 1-2 VS 1-2 SI 1-2 I 1-3
Internally Flawless Very Very Slightly Included Very Slightly Included Slightly Included Included

