



ELECTRONIC COPY

LG649401945
Report verification at igi.org



September 10, 2024

IGI Report Number LG649401945

Description LABORATORY GROWN DIAMOND

Shape and Cutting Style ROUND BRILLIANT

Measurements 6.49 - 6.52 X 3.95 MM

GRADING RESULTS

Carat Weight 1.02 CARAT

Color Grade D

Clarity Grade VVS 1

Cut Grade IDEAL

September 10, 2024
IGI Report Number LG649401945
Description LABORATORY GROWN DIAMOND
Shape and Cutting Style ROUND BRILLIANT
Measurements 6.49 - 6.52 X 3.95 MM

GRADING RESULTS

Carat Weight 1.02 CARAT

Color Grade D

Clarity Grade VVS 1

Cut Grade IDEAL

ADDITIONAL GRADING INFORMATION

Polish EXCELLENT

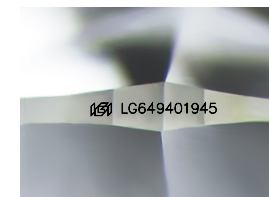
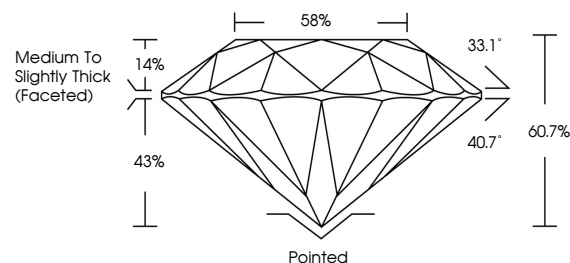
Symmetry EXCELLENT

Fluorescence NONE

Inscription(s) IGI LG649401945

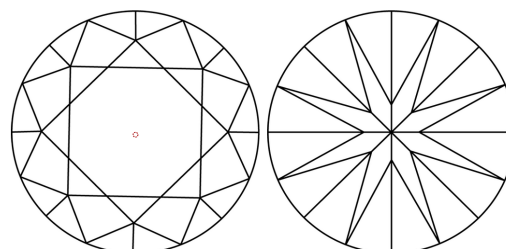
Comments: This Laboratory Grown Diamond was created by Chemical Vapor Deposition (CVD) growth process. Type IIa

PROPORTIONS



Sample Image Used

CLARITY CHARACTERISTICS



KEY TO SYMBOLS

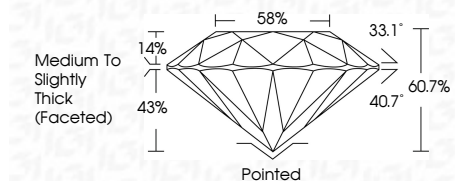
Red symbols indicate internal characteristics. Green symbols indicate external characteristics.

COLOR

D E F G H I J Faint Very Light Light

CLARITY

IF VVS 1-2 VS 1-2 SI 1-2 I 1-3
Internally Flawless Very Very Slightly Included Very Slightly Included Slightly Included Included



ADDITIONAL GRADING INFORMATION

Polish EXCELLENT

Symmetry EXCELLENT

Fluorescence NONE

Inscription(s) IGI LG649401945

Comments: This Laboratory Grown Diamond was created by Chemical Vapor Deposition (CVD) growth process. Type IIa



Summary of report details including date, report number, description, shape, measurements, grading results (Carat Weight, Color Grade, Clarity Grade, Cut Grade), and additional grading information (Polish, Symmetry, Fluorescence, Inscription(s)).